

BIODOM

---

PELLET BOILER

# **BIODOM 54 A**

*Instructions for use, maintenance and installation*

---



Jun 2019

---



## GENERAL INFORMATION

### BUYER:

NAME AND SURNAME: \_\_\_\_\_

STREET AND HOUSE NO.: \_\_\_\_\_

CITY: \_\_\_\_\_

PHONE NO/GSM: \_\_\_\_\_ E-MAIL: \_\_\_\_\_

DATE OF SALE: \_\_\_\_\_

INVOICE NUMBER: \_\_\_\_\_

PRODUCT TYPE: \_\_\_\_\_

SERIAL NUMBER: \_\_\_\_\_

DURATION OF WARRANTY: 2 YEARS

STAMP AND SIGNATURE: \_\_\_\_\_

---

### COMMISSIONING OF THE DEVICE

DATE OF COMMISSIONING: \_\_\_\_\_

AUTHORIZED COMPANY NAME: \_\_\_\_\_

STREET AND HOUSE NO.: \_\_\_\_\_

CITY: \_\_\_\_\_

PHONE NO.: \_\_\_\_\_

NAME AND SURNAME OF SERVISER: \_\_\_\_\_

STAMP AND SIGNATURE OF SERVISER: \_\_\_\_\_

(FILLS IN AN AUTHORIZED SERVICE COMPANY)



**WARRANTY CARD NUMBER (No. of the boiler):** \_\_\_\_\_

**BUYER:**

NAME AND SURNAME: \_\_\_\_\_

STREET AND HOUSE NO.: \_\_\_\_\_

CITY: \_\_\_\_\_

PHONE NO/GSM: \_\_\_\_\_ E-MAIL: \_\_\_\_\_

DATE OF SALE: \_\_\_\_\_

INVOICE NUMBER: \_\_\_\_\_

PRODUCT TYPE: \_\_\_\_\_

SERIAL NUMBER: \_\_\_\_\_

---

**COMMISSIONING OF THE DEVICE**

DATE OF COMMISSIONING: \_\_\_\_\_

AUTHORIZED COMPANY NAME: \_\_\_\_\_

STREET AND HOUSE NO.: \_\_\_\_\_

CITY: \_\_\_\_\_

PHONE NO.: \_\_\_\_\_

NAME AND SURNAME OF SERVISER: \_\_\_\_\_

SERIAL NUMBER: \_\_\_\_\_

STAMP AND SIGNATURE OF SERVISER: \_\_\_\_\_

**(FILLS IN AN AUTHORIZED SERVICE COMPANY)**

**COMPLETED FORM RETURN TO BIODOM**

**DIFFERENCES:**

---

---

---

---

---

---

---

## **WARRANTY CARD NUMBER (No. of the boiler):**

### **BUYER:**

NAME AND SURNAME: \_\_\_\_\_

STREET AND HOUSE NO.: \_\_\_\_\_

CITY: \_\_\_\_\_

PHONE NO./GSM: \_\_\_\_\_ E-MAIL: \_\_\_\_\_

DATE OF SALE: \_\_\_\_\_

INVOICE NUMBER: \_\_\_\_\_

PRODUCT TYPE: \_\_\_\_\_

SERIAL NUMBER: \_\_\_\_\_

---

### **INSTALLATION OF DEVICES**

DATE OF INSTALLATION: \_\_\_\_\_

NAME OF THE INSTALLATION COMPANY: \_\_\_\_\_

STREET AND HOUSE NO.: \_\_\_\_\_

CITY: \_\_\_\_\_

PHONE NO./GSM: \_\_\_\_\_

E-MAIL: \_\_\_\_\_

NAME AND SURNAME OF INSTALLER: \_\_\_\_\_

SERIAL NUMBER: \_\_\_\_\_

STAMP AND SIGNATURE OF INSTALLER: \_\_\_\_\_

**(FILLS IN AN AUTHORIZED SERVICE COMPANY)**

**COMPLETED FORM RETURN TO BIODOM**

**DIFFERENCES :**

---

---

---

---

---

---

---

---

---



**We thank you for your purchase of Biodom boiler. We ask to thoroughly read instructions for use before installing and using your pellet boiler Biodom. Heating appliances (in the following: "pellet boiler" or "boiler") of company Biodom 27 d.o.o. (in the following: Biodom) are manufactured and tested in accordance with safety requirements of European Directives in force.**

**These instructions are intended for end users, installers and authorized maintenance personnel for Biodom pellet boilers. If you have any doubts regarding the instructions for use or require any clarification, please contact the manufacturer or authorized person of company Biodom 27 d.o.o. directly.**

Printing, translation or reproduction, even in part, of the instructions of use is possible only upon approval by company Biodom 27 d.o.o.

You have purchased a Biodom boiler, which is used for central heating. The fuel for the boiler is wood pellets. The boiler operates automatically by dosing pellets with a dosing screw from pellet container, which is a component part of device and is installed above the boiler part of the device. The container is filled with pellets from above, through the provided cover. Ensure that the incineration device is correctly dimensioned according to heating system and thermal requirements of the building. Connection and start-up of the machine must be done by an authorized person.

Flame, produced with correct burning of wood biomass inside the boiler, emits the same amount of carbon dioxide (CO<sub>2</sub>) as with normal decomposition of wood.

The amount of CO<sub>2</sub> produced by the combustion or decomposition of wood corresponds to the amount of CO<sub>2</sub> that a tree obtains from the environment and then transforms to oxygen and carbon.

The use of non-renewable fossil fuels (coal, fuel oil, gas), as opposed to what happens with wood, releases into the air enormous amount of CO<sub>2</sub> accumulated over millions of years, which increases the greenhouse effect. The principle of clean combustion fully meets all environmental requirements, and Biodom has based its entire development on this basis.

## INDEX

<b>1.</b>	<b>TECHNICAL CHARACTERISTICS OF MODEL BIODOM 54 A.....</b>	<b>12</b>
<b>2.</b>	<b>DIMENSIONS OF BOILER BIODOM 54 A .....</b>	<b>13</b>
<b>3.</b>	<b>PURPOSE OF INSTRUCTIONS FOR USE .....</b>	<b>14</b>
3.1.	UPDATES .....	14
<b>4.</b>	<b>RESPONSIBILITY OF MANUFACTURER.....</b>	<b>14</b>
4.1.	BASIC PREVENTIVELY REQUIRED STANDARDS .....	14
4.2.	TRANSPORTATION AND HANDLING OF PELLET BOILER.....	15
4.3.	RESPONSIBILITY OF INSTALLER .....	15
<b>5.</b>	<b>INSTALLATION .....</b>	<b>16</b>
5.1.	PLACEMENT.....	16
5.2.	EXTRACTION OF SMOKE GASES.....	19
5.3.	INSULATION AND DIAMETER OF HOLES IN THE ROOF .....	21
5.4.	INLET AIR .....	21
5.5.	ELECTRICAL CONNECTION .....	22
<b>6.</b>	<b>BOILER COMMISSIONING .....</b>	<b>24</b>
<b>7.</b>	<b>SAFETY WARNINGS.....</b>	<b>25</b>
7.1.	SAFETY WARNINGS FOR MAINTENANCE STAFF .....	25
7.2.	SAFETY WARNINGS FOR USER .....	25
<b>8.</b>	<b>INSTRUCTIONS FOR SAFE IGNITION AND CLEANING OF BOILER.....</b>	<b>26</b>
8.1.	REGULAR MAINTENANCE AND CLEANING OF BOILER .....	26
8.2.	CONTROL AND PARTS REQUIRING MAINTENANCE .....	28
8.3.	ADDITIONAL MAINTENANCE .....	28
<b>9.</b>	<b>IMPORTANT SAFETY INFORMATION .....</b>	<b>29</b>
<b>10.</b>	<b>PELLET QUALITY IS VERY IMPORTANT.....</b>	<b>29</b>
10.1.	STORING PELLETS .....	30
<b>11.</b>	<b>DESCRIPTION AND OPERATION OF CONTROL DEVICE.....</b>	<b>31</b>
<b>12.</b>	<b>SCHEME OF ELECTRONIC CONTROL PANEL OF THE BOILER .....</b>	<b>40</b>
<b>13.</b>	<b>ALARM STATUSES .....</b>	<b>41</b>
<b>14.</b>	<b>INFORMATION REGARDING DESTRUCTION AND DISPOSAL OF BOILER .....</b>	<b>42</b>
<b>15.</b>	<b>INSTRUCTIONS FOR INSTALLERS.....</b>	<b>43</b>

16. BOILER CONNECTION INSTRUCTIONS ..... 44

17. CONNECTION SCHEMES ..... 47

18. WARRANTY CONDITIONS..... 49

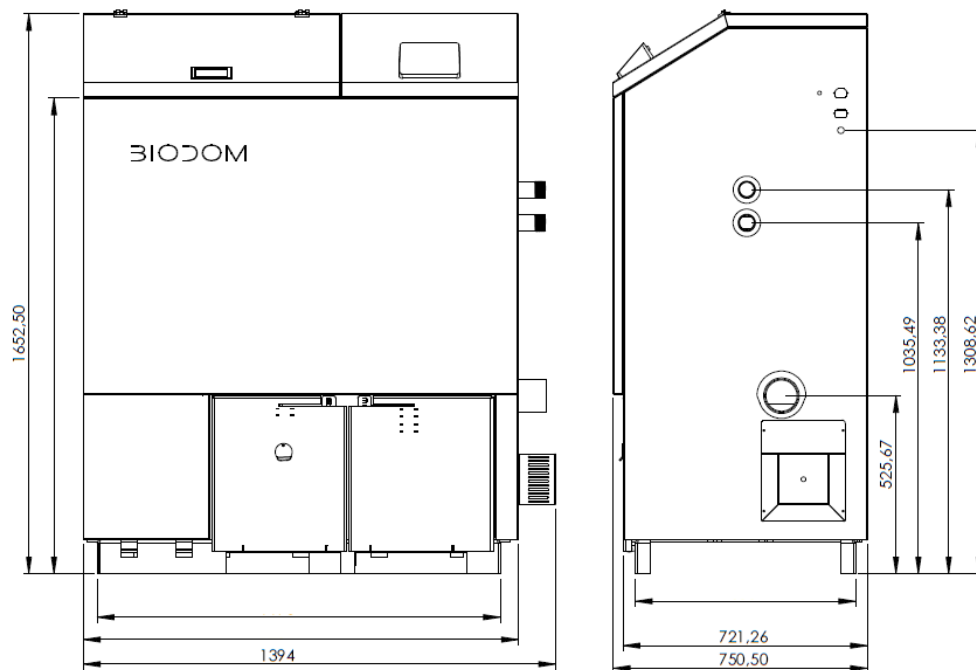
# 1. TECHNICAL CHARACTERISTICS OF MODEL BIODOM 54 A

	MIN	NOM
Thermal power	13,4 kW	51,6 kW
Efficiency	90,55 %	90,85 %
Pellet consumption	3 kg/h	11,7 kg/h
Burning time with full pellet reservoir	67 h	18 h
CO emissions (at 10% O <sub>2</sub> )		55 PPM
Average temperature of exhaust gases	65°C	155°C
Mass flow of exhaust gases	36,15 kg/h	119,32 kg/h

Fuel	Pellets C1
Boiler class - EN 303-5:2012	5
Chimney	Ø100 mm
Boiler water volume	156 l
Boiler temperature	Till 85 °C
Max boiler temperature	90 °C
Minimum return water temperature	50 °C
Max. pressure	2,5 bar
Odpornost kotla ΔT=20°C	27 mbar
Burning chamber volume	94,31 l
Weight	570 kg
Pellet reservoir capacity	~ 200 Kg
Chimney draught	0,11 (± 0,02) mbar
Voltage	220V
Max. current by max. electrical consumption	1,80A
Frequency	50Hz
Max. electrical energy consumption	117,20 W

Min. electrical energy consumption	73,6 W
Max- electrical consumption by boiler start	293 W
Safety level	IP20
Boiler functions with two fans	
Boiler function – underpressure burning	
Boiler function – no condensation conditions	
Noise level < 70 dB	

## 2. DIMENSIONS OF BOILER BIODOM 54 A



### 3. PURPOSE OF INSTRUCTIONS FOR USE

The purpose of instructions for use is that the user takes all necessary measures and prepares all required equipment to ensure safe and proper use of combustion device.

#### 3.1. UPDATES

These instructions reflect the state of the product at the moment the boiler is produced.

Instructions are not applicable for products, which are already present on the market with corresponding technical documentation and cannot be considered as insufficient or inadequate after any modification, adaptation or application of new technologies on newer products.

The content of this booklet must be carefully read and heeded to. All of the information, contained in this booklet, is necessary for correct installation, use and maintenance of you boiler.

The instructions must be stored carefully and safely. Instructions for use, maintenance and installation are a component part of pellet boiler.

If the pellet boiler changes ownership to another person, this person must also receive these instructions for use, together with the boiler.

If the instructions get lost, request for a new copy of instructions from the manufacturer, authorized reseller or repairman.

### 4. RESPONSIBILITY OF MANUFACTURER

In providing these instructions, Biodom 27 d.o.o. rejects any civil or penal liability, direct or indirect, due to:

- accidents caused by non-compliance with standards and specifications from these instructions;
- accidents caused by prohibited or incorrect use by the user;
- accidents caused by modifications and repairs not authorized by manufacturer Biodom 27 d.o.o.;
- poor maintenance;
- unforeseeable events;
- accidents caused by use of non-original or improper spare parts.

The installer is fully responsible for installation.

#### 4.1. BASIC PREVENTIVELY REQUIRED STANDARDS

Product Biodom 54 A is manufactured in accordance with the following standards:

DIRECTIVE EC ON MACHINERY (2006/42/EC);

DIRECTIVE EC ON LOW-VOLTAGE EQUIPMENT (2014/35/ES);

DIRECTIVE EC ON ELECTROMAGNETIC COMPATIBILITY (2014/30/ES);

DIRECTIVE EC ON BOILERS FOR HEATING ON SOLID FUELS UP TO NOMINAL POWER kW; EN 303-5

Harmonized standards:

- SIST EN ISO 12100-1: 2004 and A1: 2010;
- SIST EN ISO 12100-2: 2004 and A1: 2010;
- SIST EN 303-5: 2012;
- 61000-6-3: 2007;
- 61000-6-2: 2005;
- 61000-3-3: A1 2002;
- 61000-3-3: A2 2006;
- EN 60204-1: 2006 and A1:2009.

#### 4.2. TRANSPORTATION AND HANDLING OF PELLET BOILER

When moving the boiler, pay attention to your safety.

Before transport and handling of the boiler, which must be performed in complete safety, make sure that the lifting capacity of transport equipment suffices. Avoid sudden and/or abrupt movement of boiler.



#### **ATTENTION**

**DISCARD ALL PACKAGING OUT OF REACH OF CHILDREN. DANGER OF SUFFOCATION WITH BAG, FOIL, POLYSTYRENE ETC.**

---

#### 4.3. RESPONSIBILITY OF INSTALLER

It is the responsibility of the installer to check adequacy of installation and pipeline, ensure air intake for combustion, ensures regulated distances and all other solutions, required for installation of the pellet boiler.

It is the responsibility of the installer to ensure compliance with local legislation in force in the place of pellet boiler installation.

Use of the pellet boiler must conform with instructions, provided in Instructions for use, maintenance and installation, and all safety standards, specified by local legislation in the place of pellet boiler installation.

Standard UNI 10683 defines duties of installer. The installer must check:

- type of device to be installed;
- adequacy of space for installation of unit, reflected by minimum required size of the space, in which the pellet boiler will be installed;
- instructions of the manufacturer about heating device, regarding requirements of smoke gases outlet;
- flue pipe internal diameter, the material it is made of, is it straight or even and that there are no obstructions;
- height and, if required, vertical extension of flue pipe;
- existence and suitability of flue pipe cover resistance;
- possibility of outside air intake;
- possibility of simultaneous use of generator for connection with other equipment.

If the results of all above provided checks are positive, installation may proceed. Carefully heed to instructions provided by the manufacturer, as well as safety and fire prevention standards in force. After the first start-up of the boiler, perform a minimum 30-minute test of operation to check all required demands.

When the installation is complete, the installer must provide the customer with the following:

- instructions for use, maintenance and installation from the manufacturer (if not included in the unit);
- required documentation in accordance with standards in force;
- perform training of customer for operation and regular maintenance and cleaning of the device.

## 5. INSTALLATION

Responsibility for installation work in the space is entirely upon the customer.

Before proceeding with installation, the installer must comply with all required legal safety standards, especially:

- Check that norms regarding pellet boiler installation meet local, national and European norms
- Heed to requirements set forth in this document
- Check that pipes and air intake are compliant with the type of installation
- Do not make temporary electrical connections by using unsuitable cables
- Check earthing of electrical system
- Always use individual safety equipment and all legally required protection
- Always allow sufficient space for maintenance work
- Acquire consent of chimney sweep for connection of boiler to flue
- Perform measurement of smoke gases outlet after finished installation.

### 5.1. PLACEMENT

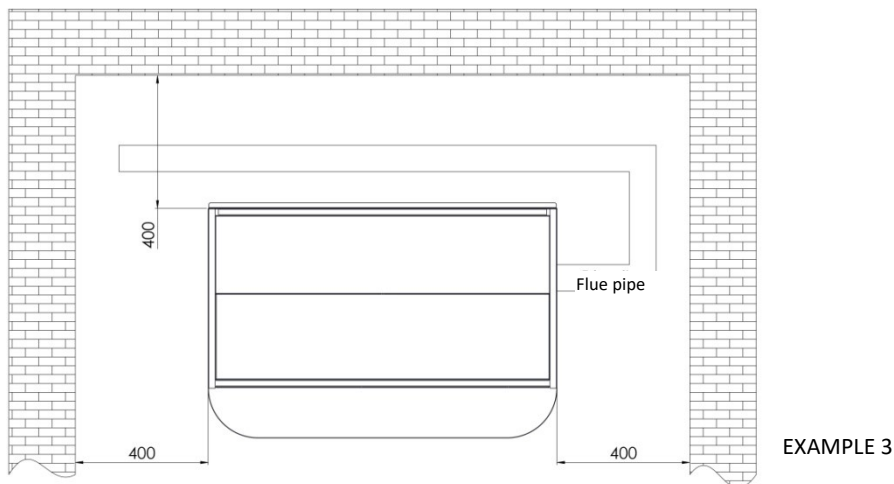
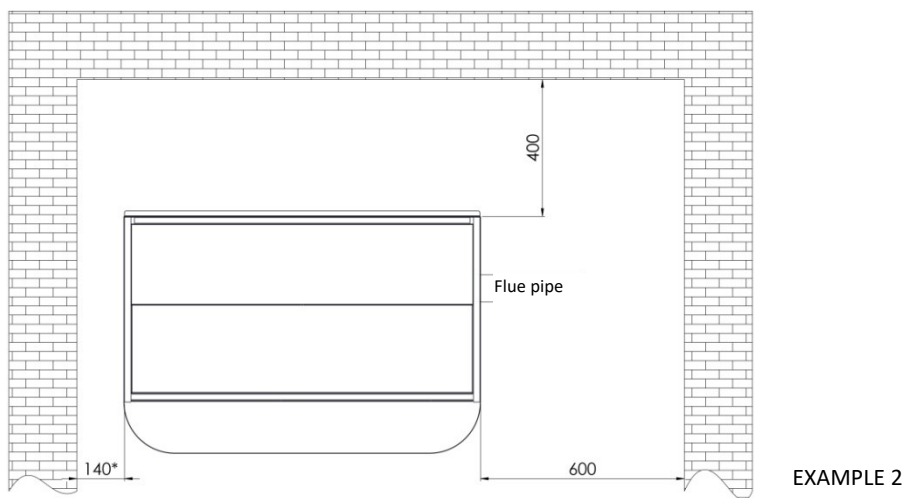
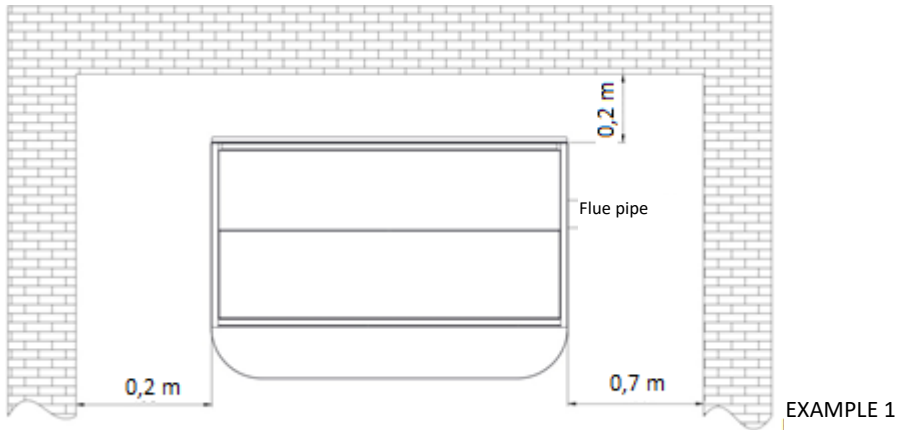
It is advisable to remove pellet boiler packaging only when it is in the place of installation.

If the adjacent walls and/or flooring are made of material that is not heat resistant, suitable protection must be provided using insulating, non-combustible material.

For protection of flooring, made of flammable material, we advise installing a metal plate with thickness 3 to 4 mm under the boiler, which protrudes at least 30 cm out from the front of the pellet boiler.

Pellet boiler must be installed in accordance with drawing that defines distances from walls (**figure 1**).





**Figure 1: Minimum distance of boiler from boiler room walls**

If the pellet boiler is installed in a boiler room, where there are other devices, which drain air (other boiler, various suction fans etc.), make sure that the volume of air intake is sufficient for safe operation of combustion device.

If the smoke duct passes through a ceiling, it must be properly insulated using diaphragm of non-combustible insulation material.

When the pellet boiler is placed, it must be levelled with support feet (horizontal positioning).



### ATTENTION

Smoke gas discharge **MUST NOT BE CONNECTED TO:**

- Flue pipe, used by other combustion devices (boilers, stoves, fireplaces etc.);
  - Air extraction systems (hoods, air extraction fans etc.).
- 



### ATTENTION

Installation of draught closing valves is prohibited!

Flue connection Ø 100 mm from pellet boiler to flue pipe should be:

- no more than 5 m long (in case of longer connection, dimension of connection pipe must increase to Ø 130 mm);
  - each 90° joint requires a 1 m shorter flue connection;
  - each joint must be fitted with doors for cleaning;
  - connections between pipes must be sealed.
- 



### ATTENTION

If there is too much resistance in extraction system (many joints, improper end fitting, bottlenecks etc.), extraction of smoke gases is not provided for. Therefore, connection pipes and joints must be increased to a greater dimension – Ø 130 mm. If the flue does not ensure appropriate extraction of smoke gases, it can also come do improper operation and, consequently, to alarm from boiler Biodom 54 A. It is advisable that the flue is inspected by an expert before installing boiler Biodom 54 A.

---

Smoke gases extraction system from pellet boiler functions on the basis of negative pressure in the boiler and barely perceivable pressure in flue connection pipe Ø 80 mm. It is very important that the smoke gases extraction is sealed.

Layout and structure of the space, where the flue is installed, needs to be analyzed. If it passes through walls and/or roof, it must be properly installed in accordance with fire prevention safety standards.

Ensure that there is enough air for proper combustion in the space, where the pellet boiler is installed. If boiler Biodom 54 A lacks oxygen/air, the boiler displays an alarm. External supply or intake of external air requires a pipe with a diameter of at least 110 mm with maximum length of 10 m. Each 90° joint requires a deduction of 1 m in line length. If the air supply is longer, diameter of air intake pipe must be increased.

In case of a grid on the facade, draught opening must be 100 cm<sup>2</sup> or larger.

The device operates at 220 V – 50 Hz. Make sure that the electrical cables are not laid under the boiler, that they are far away from hot surfaces and that they do not touch sharp parts, which could damage

them. If the pellet boiler is under electrical overload, life expectancy of electrical component greatly reduces.



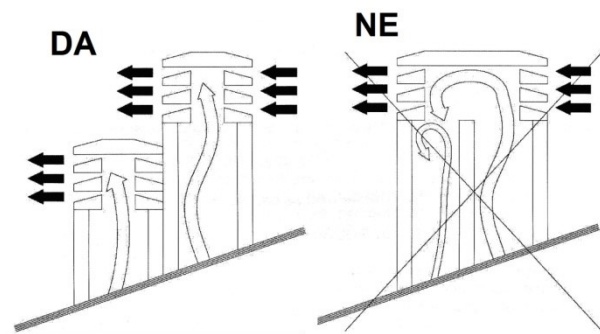
### ATTENTION

**Never turn off the boiler by pulling the electrical cable from the socket, while fire is still burning in the boiler. This could damage the boiler and seriously jeopardize its functioning.**

---

## 5.2. EXTRACTION OF SMOKE GASES

Extraction of smoke gases must be in accordance with regulations in force. Pipes for smoke gases must not be connected to other discharge pipes of any other combustion device (**figure 2**). It is prohibited to set up extraction of smoke gases into closed and/or semi-closed spaces, e.g. garage, narrow passages or hallways, underpasses or any other similar spaces. If the flue connection is not suitable, it must be implemented in accordance with previously provided requirements (point 3.1).



**Figure 2**



### ATTENTION

**Extraction of smoke gases must be earthed in accordance with regulations in force. (Earthing connection is required by law).**

**Earthing must be independent of combustion unit.**

---

Regarding dimensions and material, from which it is made, the flue pipe must conform to standards UNI 9615-9731, UNI 10683 - EN1856-1.

Flue pipes in poor condition and/or made of unsuitable materials (asbestos, zinc sheet metal etc., with rough or porous surfaces) are prohibited by law and compromise proper boiler operation.

Smoke can be extracted through a traditional flue pipe (see figure below) provided that the following rules are met:

- Check condition of flue pipe maintenance. For proper maintenance and/or restoration contact chimney sweep service.
- Extraction of smoke gases can be connected directly to flue pipe only if it has a maximum dimension of 20 x 20 cm or diameter of 20 cm and is fitted with inspection hole.
- If the flue pipe is of greater dimensions, a stainless pipe (with required diameter) with proper insulation must be installed into it.
- Make sure that the connection with the flue pipe is properly sealed.
- Avoid contact with flammable material (such as wood ashes), and, in any case, insulate them with fire-resistant material.

When using connections between the pellet boiler and flue pipe, it is mandatory to use joints with cleaning doors (**figure 3**). Use of joints with cleaning doors enables regular cleaning without the need to disassemble pipes. Exhaust fumes in flue connection are under slight pressure. Therefore, it is compulsory to check that the cover for cleaning ash is completely hermetically closed and that it remains in this state after each cleaning. Ensure proper reassembly and check condition of the seal.



**Figure 3: Cleaning unit**

Connection between pipes must be always made with male fitting turned upwards (**figure 4**).

It is advisable to avoid using horizontal connections of pipes to flue. If this is not possible, the pipes must not be installed in a downwards angle, but at an upwards angle of at least 5° (**figure 5**).

Horizontal installation of pipes must not exceed 2 m in length.

It is not advisable to connect the pipe from the pellet boiler directly to flue with horizontal pipe, longer than 1 m.

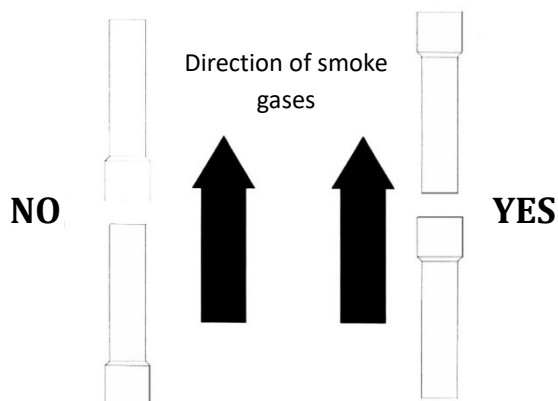


Figure 4

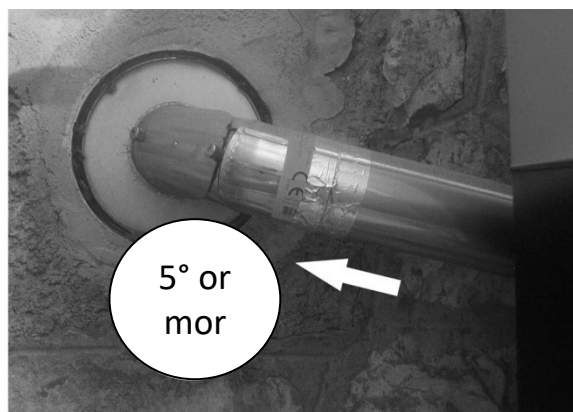


Figure 5

### 5.3. INSULATION AND DIAMETER OF HOLES IN THE ROOF

Once the position of boiler installation is determined, a hole for passage of smoke pipes must be made. This changes in regard to the type of installation, diameter of smoke pipes and type of wall or roof, through which it must be guided. Insulation must be of mineral origin (rock wool) with nominal density greater than 80 kg/m<sup>3</sup>.

Perfect draught depends mostly on flue pipe, which must be free of obstructions, such as bottlenecks and/or various joint connections. Joint must be at an angle of 30°, 45° and 90°. Joints at an angle of 90° must be made of three parts (**figure 6**).

In any case, it is mandatory to provide an initial vertical straight pipe of 1,5 metres in length (minimum) to ensure correct extraction of smoke gases.

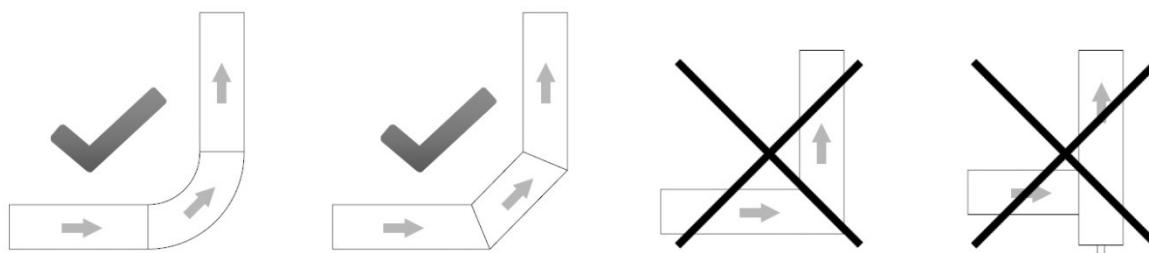


Figure 6

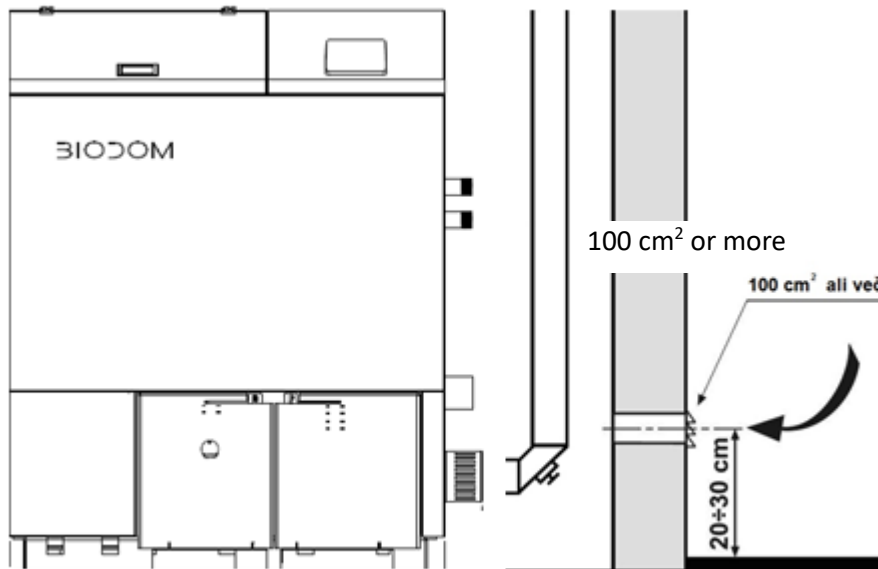
### 5.4. INLET AIR

Air from the environment, required for correct combustion, must be refreshed with new air, through opening in the wall, slot in boiler room doors or grid on the window. This will ensure proper combustion and proper boiler operation.

Opening for intake of fresh air must also be fitted with protective slot against rain, wind and insects. Hole must be made on the external wall of the space, where the pellet boiler is installed.

Standard UNI 10683 prohibits intake of inlet air from storage of flammable materials or spaces with the risk of fire.

If there are other combustion devices in the room, a sufficient amount of air must be ensured, which is required for proper combustion of all combustion devices, and regard all technical properties of already installed ventilation systems in the boiler room.



**Figure 7**

## 5.5. ELECTRICAL CONNECTION

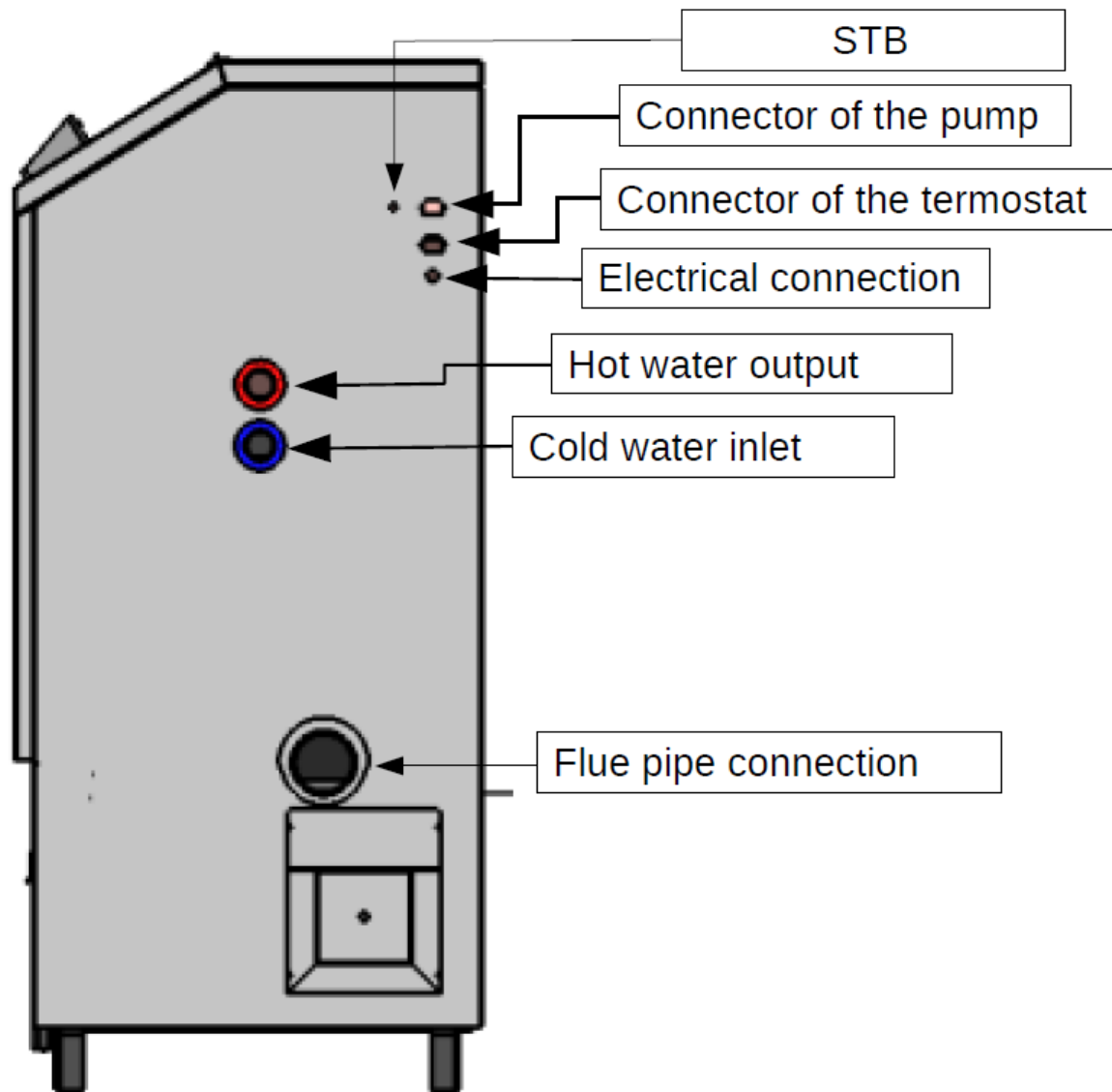
Combustion device requires connection to electrical network. Our pellet boilers are fitted with power supply cable for medium temperatures. If the power supply cable is damaged and must be replaced, contact our service staff.

Before making electrical connections, make sure that:

- The characteristics of electrical wiring meet the data, given on the combustion device.
- **Extraction of smoke gases is earthed in accordance with regulations and local requirements in force. (Earthing is required by law).**
- **Power supply cable must never reach 80 °C above ambient temperature.** If you want to connect the boiler directly to electrical network, you must install a bipolar switch with minimum distance of 3 mm between contacts, suitable for required electrical voltage and in accordance with regulations in force. Bipolar switch must always be accessible, even after the boiler is installed.

### **Electrical connection**

The pellet boiler must be connected to electrical network. Power supply cable is 3 m long, white and designated with "220 V". Other connectors are for connecting the pump and room thermostat.



**Figure 8**

**White cable – Boiler supply (220 V)**

**White connector – Pump**

**Black connector- Room thermostat**

If the power supply cable is damaged, it must be replaced. It can only be replaced by an authorized person.

Electrical connection must be easily accessible even after the pellet boiler is installed.



## ATTENTION

**When the boiler installation is finished, it is mandatory to perform measurements of smoke gases discharge.**

---

## 6. BOILER COMMISSIONING

**Boiler commissioning can be performed only by a manufacturer authorized technician, otherwise the warranty is void.**

### INSTRUCTIONS FOR SAFETY OF PERSONS, ANIMALS AND PERSONAL PROPERTY

We wish to inform the installer on some general guidelines, which must be complied with for correct installation of pellet boiler. These are required standards, but are not sufficient; for further and more detailed information it is necessary to read the rest of the Instructions for use, maintenance and installation.

- Connect the pellet boiler to electrical network;
- Do not allow children or animals in the boiler area;
- Use only quality pellets and no other types of fuel;
- Inform all users on possible risks and hazards, and educate them on handling the pellet boiler;
- If the pellet boiler is placed on a wooden floor, it is advisable to protect the floor in accordance with regulations.



## ATTENTION

**The pellet boiler operates by creating negative pressure in the combustion chamber. Therefore, ensure that the extraction of smoke gases is thermally sealed.**

**Upon first start-up (minimum operation of boiler – 1 hour), paint evaporates fumes, which have unpleasant odour. Therefore, ventilate the room afterwards.**

---



## 7. SAFETY WARNINGS

### 7.1. SAFETY WARNINGS FOR MAINTENANCE STAFF

Along with adhering to general safety regulations, maintenance staff must also:

- Always use safety devices and individual safety equipment according to Directive 89/391/EEC;
- Disconnect power supply before commencing any work;
- Always use suitable tools;
- Before commencing any work on the boiler, ensure that the boiler, as well as the ashes in it, are cold, especially before touching it;
- **PELLET BOILER IS NOT TO BE CONSIDERED USABLE, IF EVEN ONE SAFETY DEVICE IS MALFUNCTIONING, INCORRECTLY REPAIRED OR NOT FUNCTIONING!**
- Do not perform any modifications of any type for whatever reason other than those allowed and/or approved by the manufacturer or authorized person.
- Always use original spare parts. Do not wait for boiler components to wear out before replacing them. Replacing a worn-out part, before it malfunctions, helps prevent injuries, caused by sudden failure of a component, which can seriously jeopardize persons and/or their property.
- When cleaning ash, also clean the combustion container and space beneath it.

### 7.2. SAFETY WARNINGS FOR USER

Space, where the pellet boiler will be placed, or installation area, must be in accordance with local, national and European directives.

The pellet boiler is a combustion device and external surfaces of the boiler can reach higher temperatures during operation.

The pellet boiler is a C1 class boiler, produced exclusively for burning wood pellets (pellets of 6 mm in diameter and 30 mm in length with maximum moisture content up to 10 %) or for fuel C1 (wood pellets) in accordance with standard EN 14961-2.



#### **ATTENTION**

**DURING PELLET BOILER OPERATION, CHILDREN ARE PROHIBITED TO COME NEAR OR PLAY WITH IT!**

---

When using a combustion device, it is advisable to take special care of the following:

- during boiler operation DO NOT approach it and do not touch the doors of combustion chamber, because of DANGER OF BURNS
- during boiler operation DO NOT approach it and do not touch the flue connection, because of DANGER OF BURNS
- during boiler operation DO NOT perform any kind of cleaning on the combustion device
- during boiler operation do not open the doors of the firebox, because it operates properly only when its doors are hermetically sealed (if you open the doors during operation, an alarm will sound)
- during boiler operation DO NOT remove ashes

- DO NOT allow children and animals to come near the pellet boiler
- ADHERE TO REQUIREMENTS SET FORTH IN THIS DOCUMENT

For correct use of the boiler, also heed to the following instructions:

- Use only and exclusively fuel recommended by boiler manufacturer;
- Follow instructions for maintenance;
- Clean the boiler firebox for each pellet container used (3-14 days, when the pellet boiler and ashes in it are cool);
- DO NOT use the pellet boiler in case of operation malfunction or other irregularities, abnormal noises and/or suspicious faults and IMMEDIATELY contact authorized service personnel;
- DO NOT spill water on the boiler, as well as put out fire in the combustion chamber with water;
- DO NOT lean on the boiler, as it may be unstable and could tip over;
- DO NOT use the pellet boiler as support or a fastening item. Do not leave the container cover open;
- DO NOT touch the painted surfaces of the boiler during operation;
- DO NOT use wood or charcoal in the pellet boiler, use only pellets with the following properties:  
dimension: diameter 6 mm,  
maximum length: 30 mm,  
moisture content: up to 10 %,  
combustion value: minimum 16,9 MJ/kg or 4,7 kWh/kg,  
ash content: below 0,7 %
- DO NOT use the boiler as an incinerator;
- Always ensure maximum safety.

## 8. INSTRUCTIONS FOR SAFE IGNITION AND CLEANING OF BOILER

NEVER use fuel oil, lamp oil or any other oil or any other flammable liquid to ignite the pellet boiler. Store all such liquids far away from the pellet boiler during operation.

Ensure that the pellet boiler is positioned properly and that it does not move.

Ensure that you have closed the firebox properly, and that it is closed during operation of the pellet boiler.

Vacuum ashes only when the pellet boiler is cool.

Do not use abrasive products to clean the pellet boiler.

### 8.1. REGULAR MAINTENANCE AND CLEANING OF BOILER

Use of vacuum cleaner with separator will make cleaning ashes from the boiler easier.

Before starting any kind of maintenance, also cleaning, heed to the following safety precautions:

- Shut off the pellet boiler before performing any kind of work.

- Before performing any kind of work on the boiler, make sure that the ashes in the boiler are cool.

Vacuum ashes from the combustion at least once every ten days or at each used pellet container (only when the boiler is cool) (*figure 10*).

Vacuum and carefully clean the combustion container at least once every ten days or at each used pellet container (only when the boiler is cool) (*figure 10*).

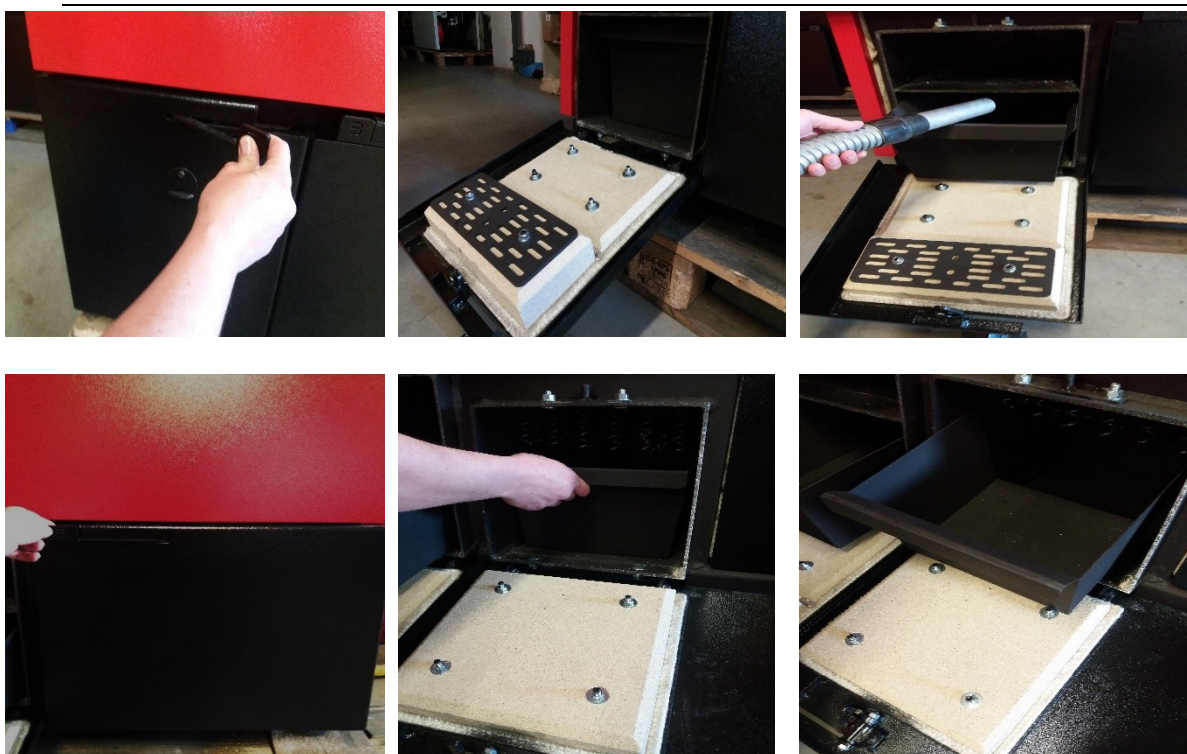
Once a month, remove the front door at the bottom of the exchanger on the right side of the boiler and vacuum the inside (*figure 10*).

Always make sure that the pellet boiler and ashes in it are cool.



## ATTENTION

Be careful that the sealant rope under the edge of combustion chamber is not damaged. If the sealant rope is damaged, contact an authorized service centre.



**Figure 10**

If you require any explanation do not hesitate and contact your installer. Because the manufacturer has no control of the installer's work, he cannot guarantee performance of his work and maintenance.

**The manufacturer shall in no way be held responsible for damages caused by third parties.**



## ATTENTION

**Ensure that the pellet boiler and ashes in it are cool!**

The combustion chamber must be cleaned after each used pellet container, vacuumed and/or emptied of all impurities remaining after the pellets have burned.

Never put pellets which have not burned back in the pellet container or ash box.

## 8.2. CONTROL AND PARTS REQUIRING MAINTENANCE

CHECK THE FOLLOWING ITEM AND MAKE SURE THAT THE PELLET BOILER IS OPERATING PROPERLY. THIS WILL INCREASE ITS EFFICIENCY AND THE EMITTED HEAT INTO THE SYSTEM WILL ALSO INCREASE:



**Ensure that the pellet boiler and ashes in it are cool!**

- For perfect cleaning, vacuum ashes from beneath the combustion container and from combustion chamber every week or at each 200 kg pellet container used (whichever comes sooner). Use a broom or a brush to clean firebox walls.
- Clean the fan for extraction of smoke gases by removing fan protection and cleaning fan blades with a broom or a brush.

GENERAL BOILER CLEANING AFTER THE END OF SEASON OR BEFORE THE START OF SEASON:



**Ensure that the pellet boiler and ashes in it are cool!**

**Disconnect power supply!**

- At the end of heating season, disconnect the boiler from electrical network. It is very important to clean and inspect the boiler, as described in the instructions.
- Door seal, fitted with high-temperature resistant fitting material, can detach after prolonged use. To reattach it, apply high-temperature fitting material on the back of the seal. This ensures hermetic sealing of firebox doors.

FLUE CONNECTION – CHIMNEY (must be cleaned at the end of each season):



**Ensure that the pellet boiler and ashes in it are cool!**

- Flue duct, chimney and chimney cover must be inspected and cleaned every year. Contact your chimney sweep for professional service.

## 8.3. ADDITIONAL MAINTENANCE

Your pellet boiler is a heat generator which uses pellets. Therefore, it requires a special type of maintenance by authorized personnel of company BIODOM 27 d.o.o. each year.

Regular annual maintenance keeps the combustion device in good condition, ensures greater efficiency, retains warranty and extends life expectancy of the device.

Type of work, described in the previous chapter, is advisable to perform after the end of heating season. Their purpose is to check and ensure flawless operation of all components.

## 9. IMPORTANT SAFETY INFORMATION

You have purchased a product of the highest quality.

The supplier is at your disposal in transferring required information. Correct installation of combustion device in accordance with instructions is important to prevent any poor functioning, hazard or risk of fire.

Pellet boiler operates on the basis of negative pressure in the combustion chamber. Therefore, always ensure that the flue connection is thermally sealed.



### ATTENTION

**In the event of fire in the flue pipe, all persons and animals must leave the area, then immediately disconnect power supply from the main switch or socket (if it is possible without risk) and call the fire department.**

---



### ATTENTION

**Do not use fine cut wood to ensure operation and safety of the boiler.**

---



### ATTENTION

**Do not use the pellet boiler as an incinerator.**

---

## 10. PELLET QUALITY IS VERY IMPORTANT

The pellet boiler is designed for use with pellets. Because the market offer many types and dimensions of pellets, it is very important to obtain pellets free from impurities. Make sure that you use only pellets that are compact and dust-free. Ask your supplier for suitable pellets with 5 mm diameter 30 mm length. Proper operation of the pellet boiler depends on the type and quality of pellets.

Pellets are filled in the pellet container from above through the opening in foldable cover of the container (**figure 11**). Make sure that, during filling, no hard objects, foil or other objects that could interfere with the operation of dosing screw, do not enter the pellet container.



**Figure 11**



### **ATTENTION**

**Persons with back injuries and pregnant women should avoid lifting pellet bags.  
The manufacture shall in no way be held liable for damages arising from the use of poor quality pellets, as well as for poor functioning of the boiler due to poor quality of used pellets.**

---



### **ATTENTION**

**Pellets should be in accordance with DIN 51731, DIN plus, Ö-Norm M-7135 or other comparable European standards.**

---

## **10.1. STORING PELLETS**

Pellets must be stored in a dry and not too cold place.

Cold and damp pellets (temperature about 5 °C) reduce thermal power and require more frequent boiler cleaning.



### **ATTENTION**

**PELLETS SHOULD NOT BE STORED NEAR THE PELLET BOILER. Keep them at least 1/2 metre away.**

---

When handling pellets, be careful not to scatter them.

If you fill the pellet container with sawdust, it can block the pellet dosing system.

## 11. DESCRIPTION AND OPERATION OF CONTROL DEVICE

In the top, left corner of the display are shown informations about the boiler operation. It is written **Heating Boiler** and bellow, it changes informations and shows: **Water temperature, Air flow l/s, Gas Temperature, Relative Feeder %**.

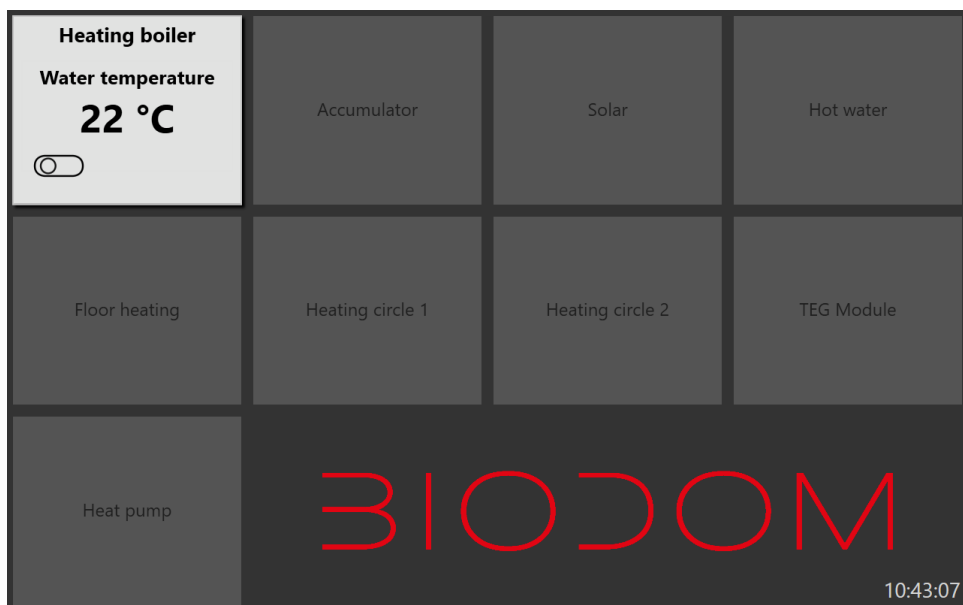


Figure 12

Clicking on the button **Heating boiler**, it opens the boiler menu, where is shown:

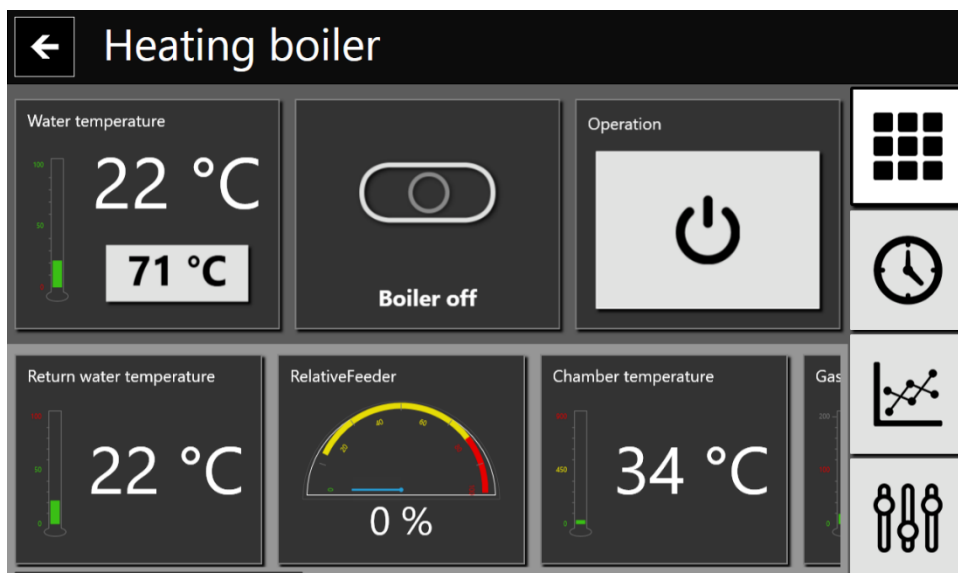


Figure 13

- Water temperature- water temperature of the boiler
- Boiler on/off- information about the boiler status
- Operation- on/off button to turn the boiler on/off
- Return water temperature- temperature of water returning from the system
- Relative Feeder- percentage of dosing motor
- Chamber temperature- temperature inside of the combustion chamber.

When you scroll it to the right, on the bottom part of the screen will write the following informations:

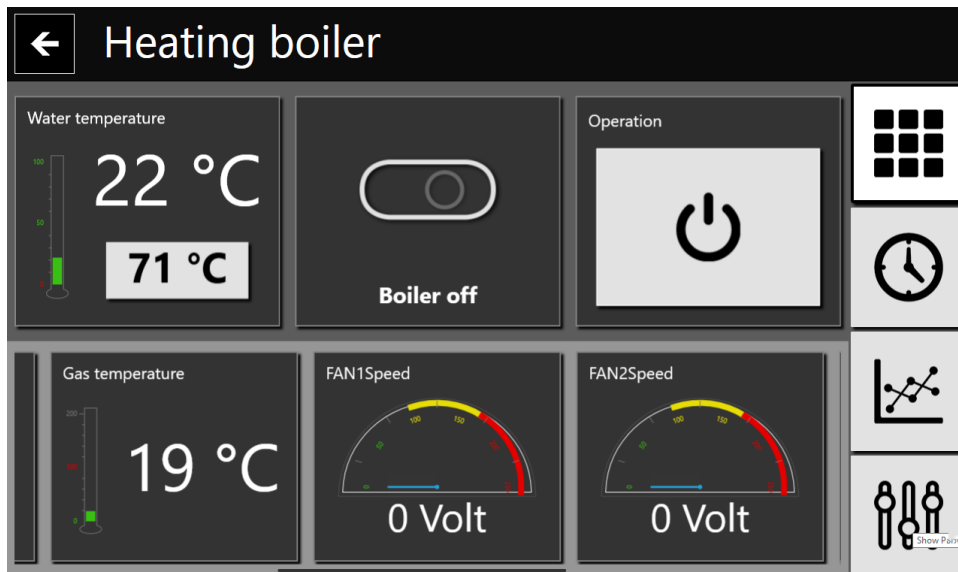


Figure 14

- Gas temperature- temperature of the smoke gasses
- FAN1 Speed- voltage of fan 1 for air intake
- FAN2 Speed- voltage of fan 2 for extracting the smoke gasses

Clicking on the button on/off starts the boiler, on Operation will show :

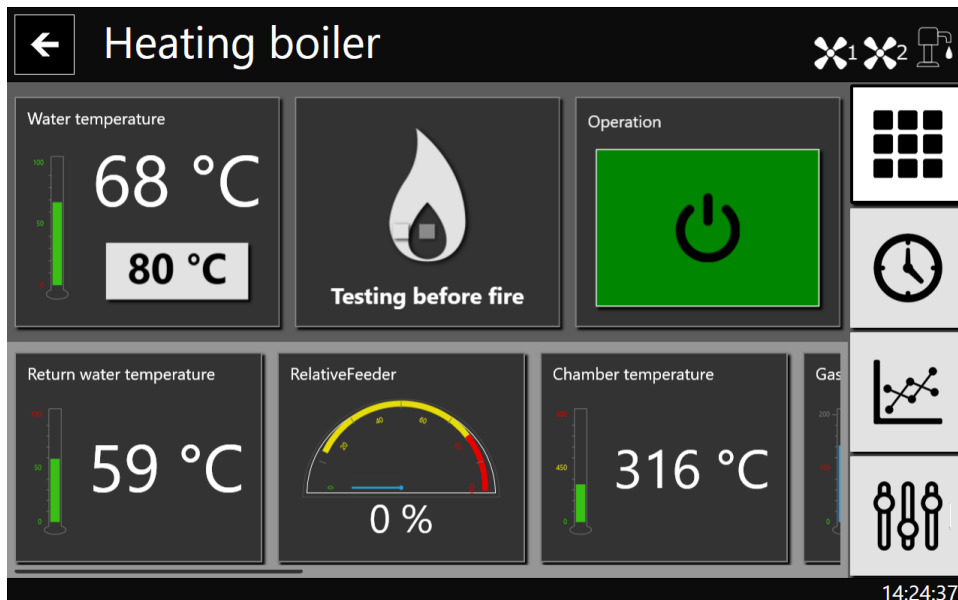


Figure 15

The next phase is Fast pelet loading, where the boiler dossen pellets for ignition:



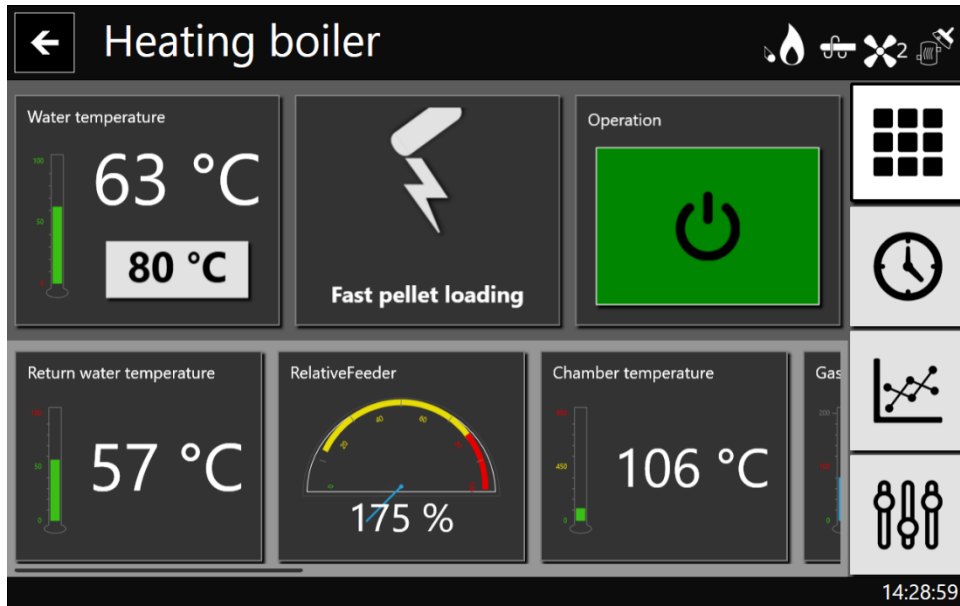


Figure 16

The next phase is Pelet ignition, where the boiler waits to start the fire:

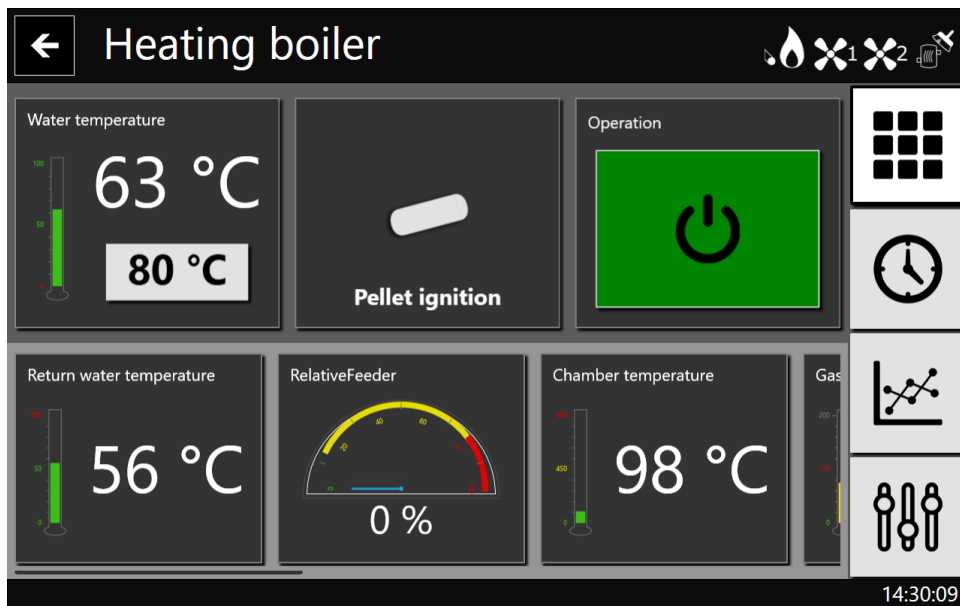


Figure 17

When boiler works normally, display shows this informations:

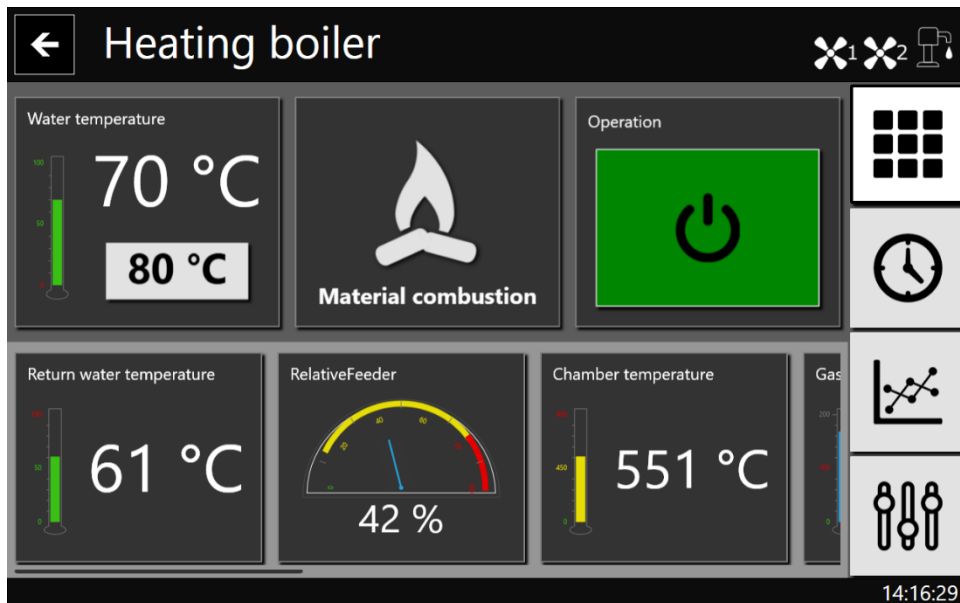


Figure 17

Then you can regulate power, according to the desired water temperature:

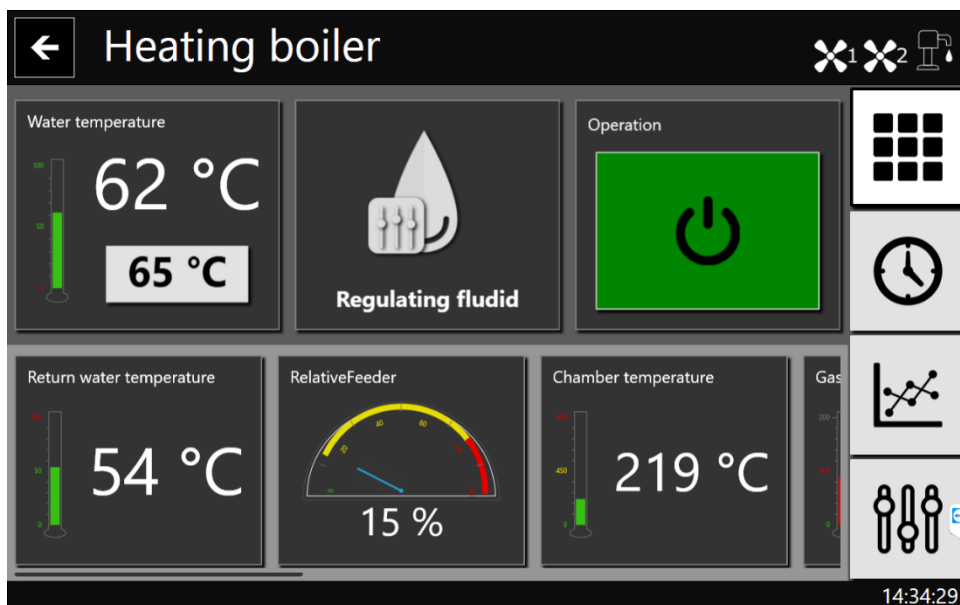


Figure 18

When the boiler is shutting off, this is what display shows:

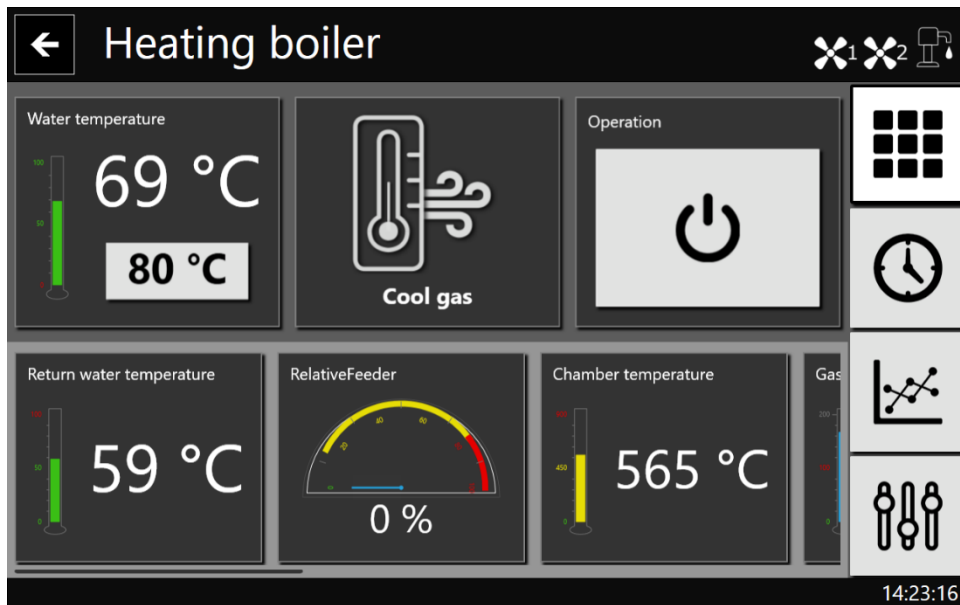


Figure 19

Clicking on the icon clock on the right side, we enter in timer menu:

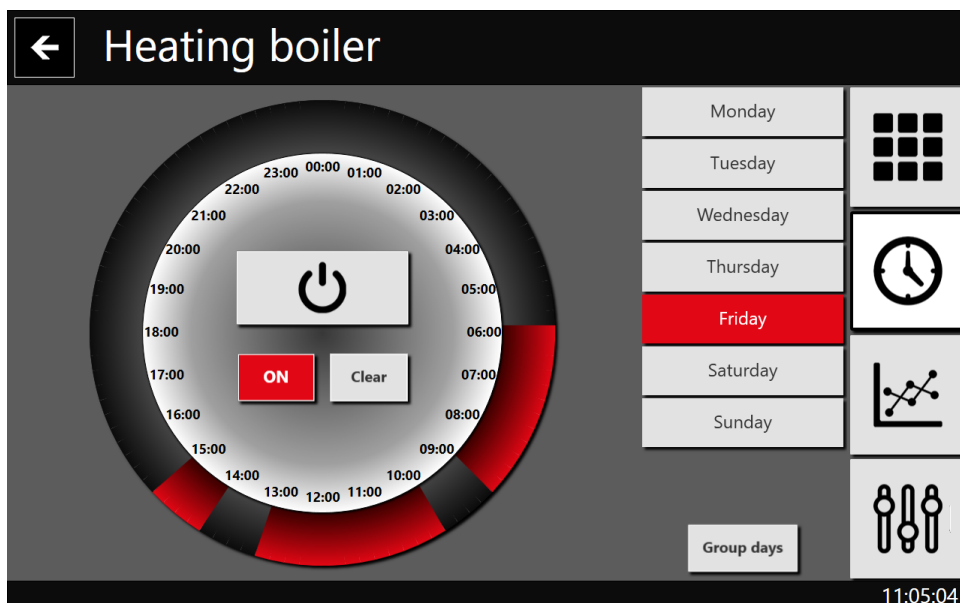


Figure 20

- In the clock circle we can set up the timer function for starting or stopping the boiler at 15 min intervals for each day of the week:
- On the right side we can choose for setting up the timer for each day of the week. **Monday, Tuesday, Wednesday, Thursday, Friday, Saturday, Sunday.**
- With button **Group Days** we can select more days for the same time.
- Adjusting the timer is done by pressing the **ON** button, then by filling in the red fields which corresponds to the time that the boiler is running, pressing the **On** button again changes the selector and the off time can be filled in the timer circle
- Button **CLEAR** will delete all previous data.
- Timer function is activated/deactivated with click on button **ON/OFF**.

Pressing on the icon:



you can select submenu of the history:

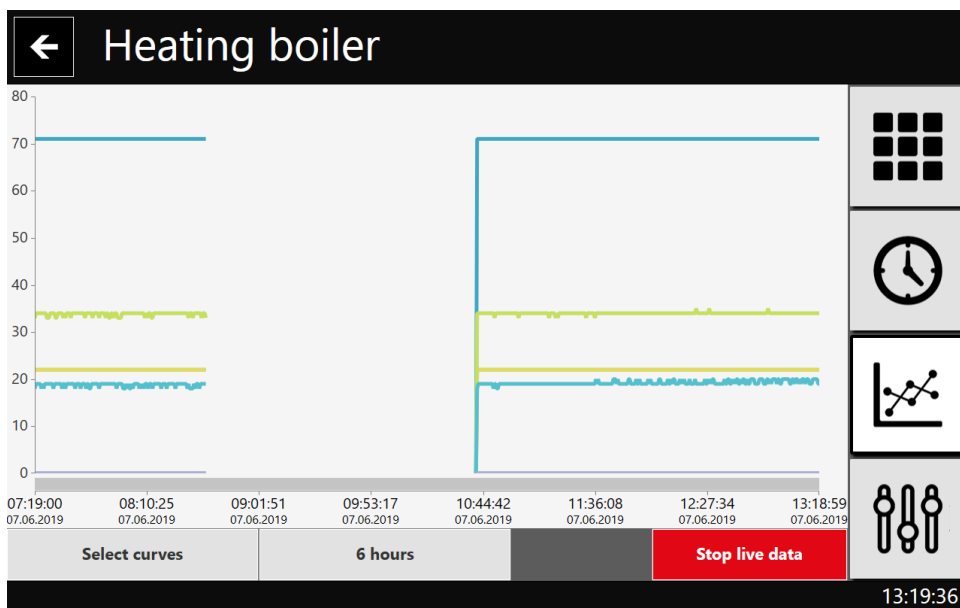


Figure 21

Clicking on the button **SELECT CURVES**, it opens the drop menu where can be selected the curve we want to look at. Pressing the button **CONFIRM**, you can select the marked data.

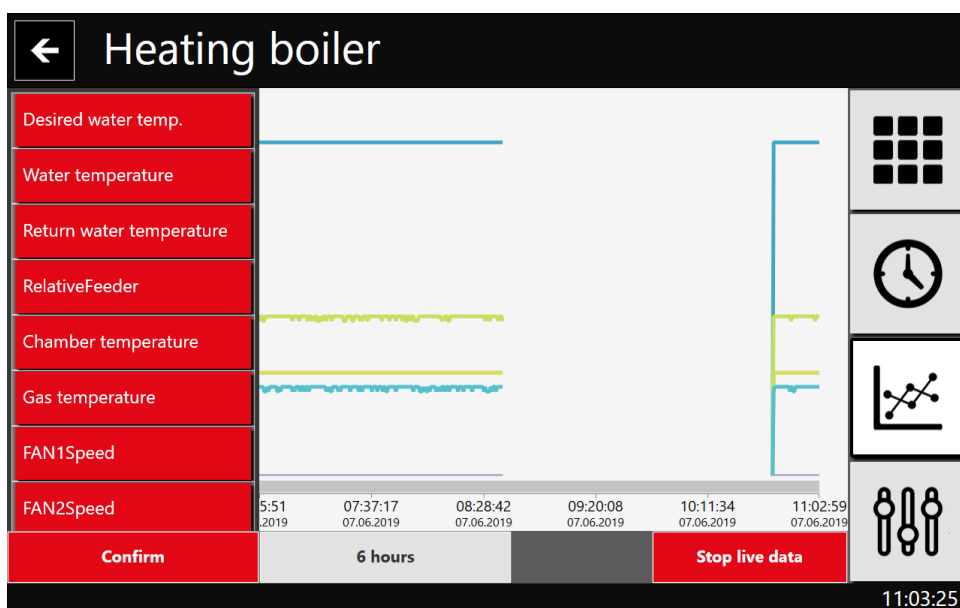


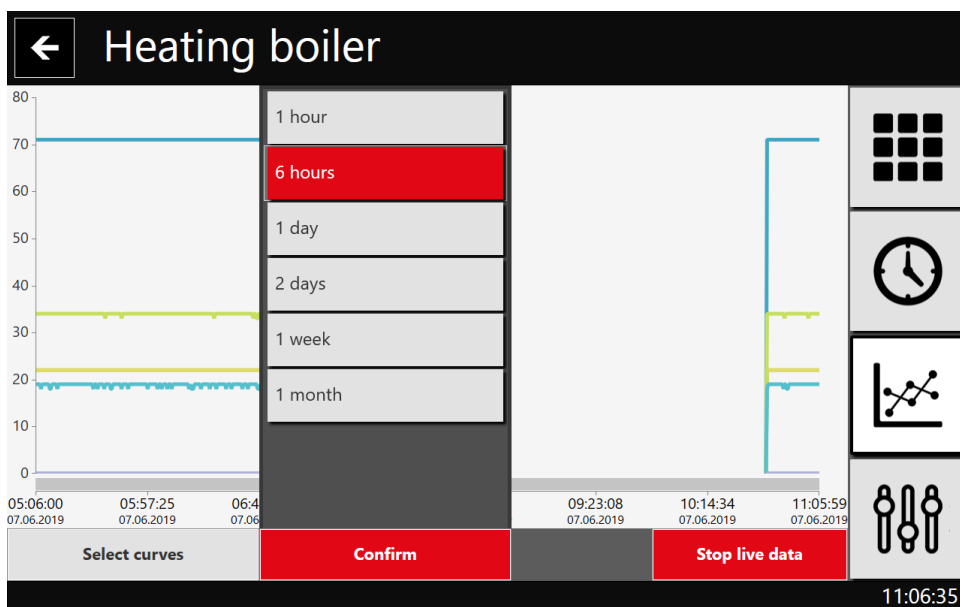
Figure 22

It is shown:

- Desired water temp.
- Water temperature
- Return water temperature
- Relative Feeder
- Chamber temperature
- Gas temperature
- FAN1 Speed
- FAN2 Speed

Clicking on button **6 HOURS**, it opens the drop menu, where can be selected the time in the past to observe the data.

Pressing the button **CONFIRM** selects the time.



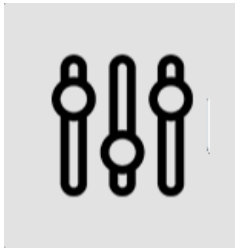
**Figure 23**



- 1 hour
- 6 hours
- 1 day
- 2 days
- 1 week
- 1 month

Clicking on the button **STOP LIVE DATA** can start /stop the informations on the graph.

Clicking on the icon:



Shows menu with parameters:

<div> <div>←</div> <div>Heating boiler</div> <div> <div>✕<sub>1</sub></div> <div>✕<sub>2</sub></div> <div> </div> </div> </div>					
Parameter	Value	Min.	Max.	Unit	
Boiler power limit	5	0	100	°C	
Desired water temp.	65	0	100	°C	
Desired accu. temp.	0	0	100	°C	
Temperature difference	7	0	20	°C	
Flow calibration	30000	0	100	Psi	
Thermostat mode	2	0	2		
GSM PIN	0000	0	9999		
					14:36:50

**Figure 24**

- Parameter
- Boiler power limit
- Desired water temp.
- Desired accu.temp.
- Temperature difference
- Flow calibration
- Thermostat mode
- GSM PIN

The value can be changed by pressing certain parameter

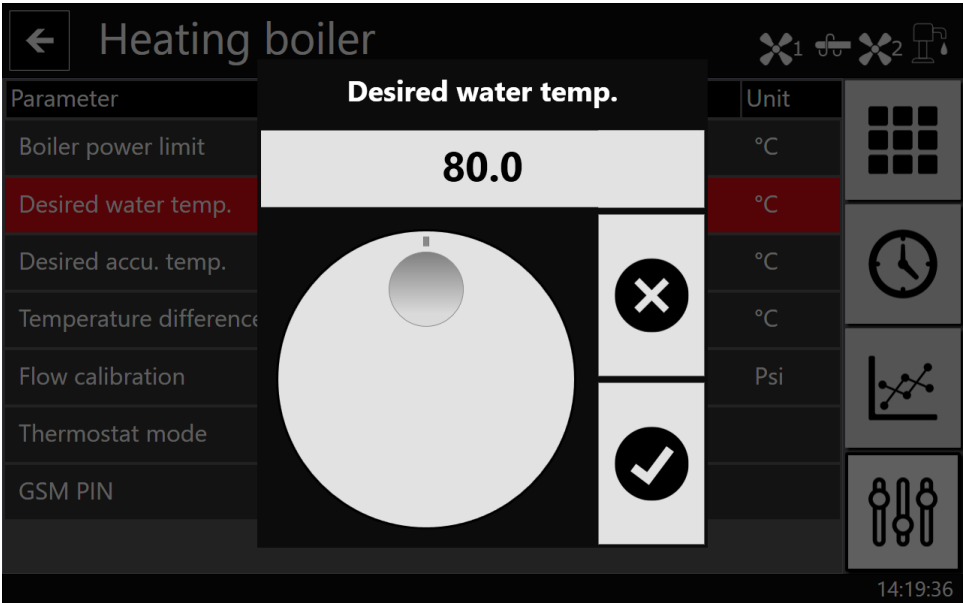


Figure 25

## 12. SCHEME OF ELECTRONIC CONTROL PANEL OF THE BOILER

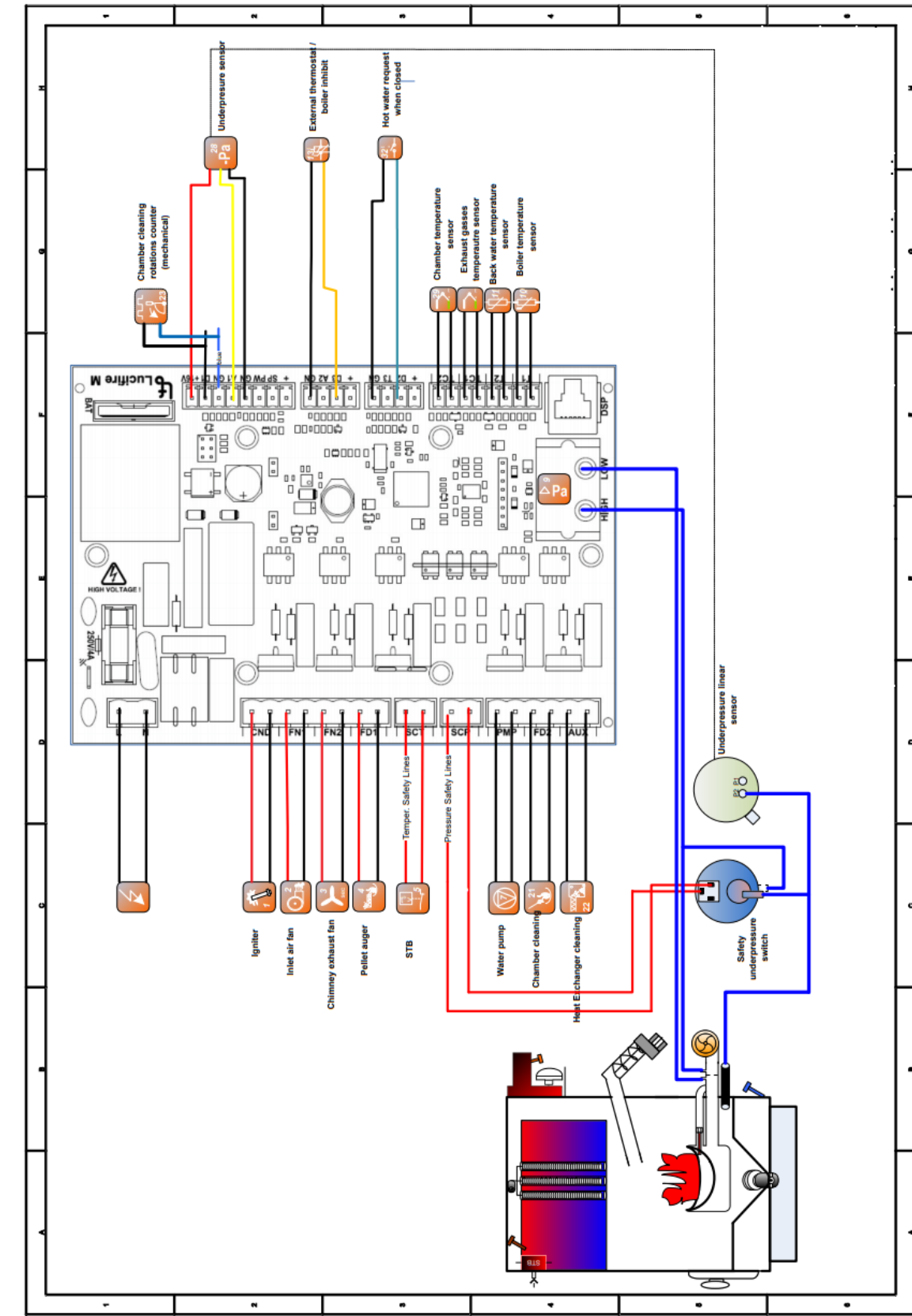


Figure 26



## 13. ALARM STATUSES

In case of an alarm the boiler will show a yellow warning triangle.

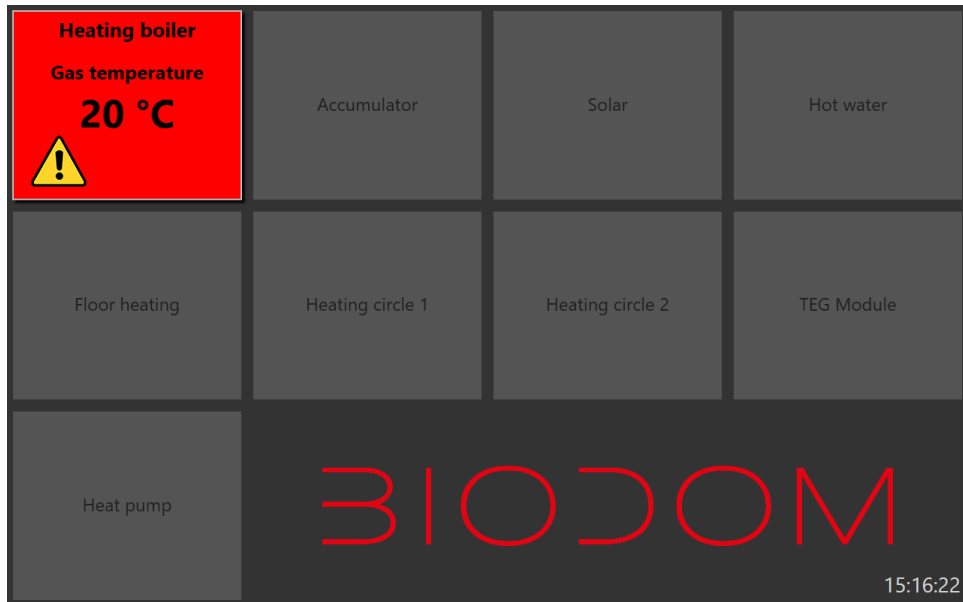


Figure 27

When you click on it, it will show on display information boiler didn't start.

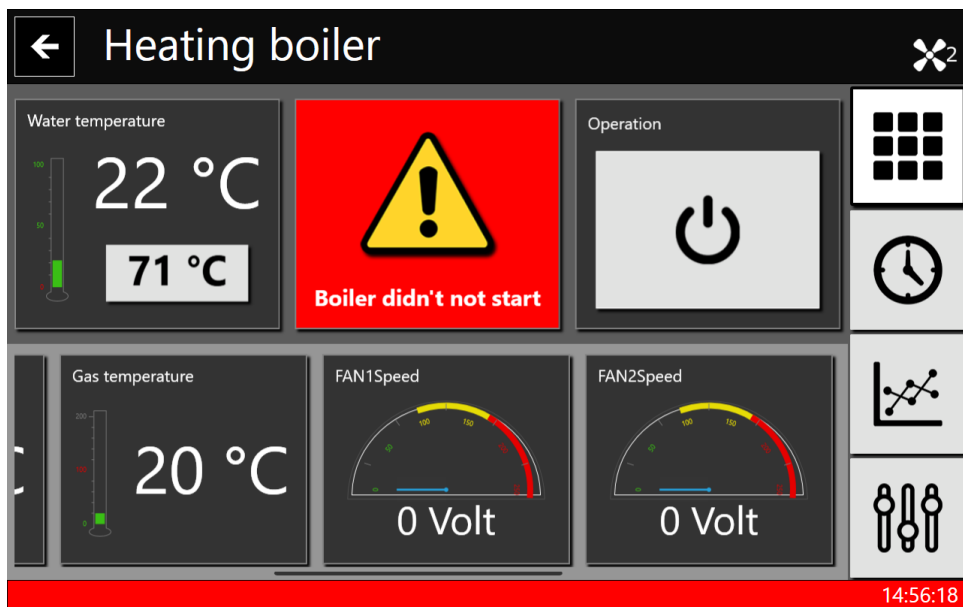


Figure 28

**When that happens, please consult the manual, section alarms.**

## 14. INFORMATION REGARDING DESTRUCTION AND DISPOSAL OF BOILER

Destruction and disposal of pellet boiler is sole responsibility of the owner, who must act in accordance with laws in force in his country regarding safety, respect and protection of environment.

Destruction and disposal of pellet boiler can be entrusted to a third person with licence or authorization for disposal and destruction of aforementioned materials.

**INDICATION:** in any case, you must adhere to and respect laws in force in the county in which the pellet boiler is installed.



### ATTENTION

All disassembled parts must be properly disposed of:

- remove all electrical parts;
- disconnect the battery from control device;
- dispose of the battery of control device in accordance with norms in appropriate containers;
- dispose of the boiler core or sell it as scrap metal.



### ATTENTION

Disposed pellet boiler in accessible areas can present a serious danger for people and animals. Owner of the boiler is always responsible for damage caused.

*Once the boiler is destructed, CE mark, Instructions for use, maintenance and installation and other documents regarding the boiler must also be destroyed.*

---

## 15. INSTRUCTIONS FOR INSTALLERS

---

This part of the instructions is intended solely for installer and contains all key information for installation and connection of combustion device Biodom 54 A.

## 16. BOILER CONNECTION INSTRUCTIONS

To connect boiler Biodom 54 A to central heating system you must check:

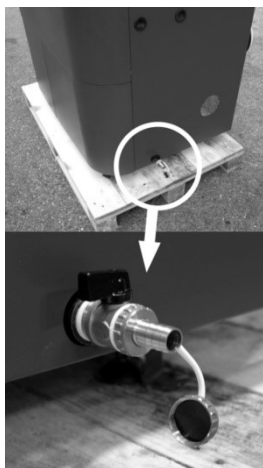
- Correct installation of pipelines of central heating (pipeline dimensions, air extraction, pipe system functionality, adequacy of heating system according to boiler power).
- Distribution units (pump functionality, closing valves functionality, electrical zone valves functionality, mixed valves functionality...).
- Ensured inlet of air into the space where Biodom 54 A combustion device is installed. Inlet must be executed in a manner, so that it cannot be closed and must, at any moment, enable supply of fresh air – oxygen for burning into space. Unsuitable solutions are slightly opened windows or open doors, supply of air through a duct along the flue from the roof is also unsuitable.
- Voltage of electrical connection for combustion device Biodom 54 A must be 220-230 V / 50 Hz (given in technical data for boiler Biodom 54 A).
- Inspection of outlet of smoke gases – flue. Condition for connection is a **consent from chimney sweep**, with which a chimney sweep ensure suitability of the flue for combustion device Biodom 54 A.

In placing and connecting the combustion device to central heating system, the installer must adhere to the following:

- Boiler Biodom 54 A must be positioned horizontally, in length and depth.
- Distances, according to the enclosed drawing, must be regarded (see **figure 1**).
- In cases of older installation on return line to combustion device Biodom 54 A, a cleaning element with closing valves is installed.
- Boiler Biodom 54 A is fitted with safety valve of 2.5 bar on return line. Installer must ensure proper size of expansion container for volume of heating water in the system (size of expansion container must be dimensioned minimum of 10 % of water volume in system "150 litres of heating water in the system, minimum volume of expansion container must be 15 l". expansion container must be installed on combustion device Biodom 54 A without closing elements.
- A filling release tap must be installed on the right side of the boiler, on connection DN20.
- Minimal pressure of heating water in boiler of 0.7 bar is ensured.
- In case where there are many heating loops (two direct loops or mix loops for radiator heating, boiler heating, convector heating), **connection scheme nr. 3** is always used, where it is necessary to use a hydraulic switch and pump on boiler loop, which is electrically connected to cable "pump" from the boiler (see **figure 8**).
- Boiler must be fitted with pressure gauge for pressure of heating water in the boiler, i.e. on pipeline before each closing valve (enable that the pressure gauge indicates pressure in the boiler and system; in the time of filling "there cannot be a closing element, which could prevent indication of pressure in the boiler in the time of filling"). On the right side of Biodom 54 A is a

provided DN20 connection for filling release tap. Filling release tap is intended for filling or emptying the heating system and boiler.

- When connecting the boiler Biodom 54 A to central heating system you must use mechanical elements, which prevent uncontrolled circulation of hot heating water through the boiler (gravity block, spring non-return valve, solenoid zone valve, electromotor zone valve...). goal of protection is to ensure amount of heating water flow through the boiler (minimal flow through the boiler must be over 300 l/h).
- When distribution of heating water is regulated by three-way mix valve (floor heating, weather controlled regulation, where water flow on boiler heating loop is reduced), the system is executed with fitted hydraulic switch and pump on primary-boiler heating loop, pump on boiler heating loop must be controlled by boiler regulation, which already has a factory produced electrical connection for pump.
- When a three-way mix valve is used (for floor or radiator heating, only in case of only one mixing heating loop), connection of boiler Biodom 54 A is always executed according to **scheme nr. 3**, where a hydraulic switch and a pump are built into the installation on heating cycle with non-return valve (pump is connected to black cable from combustion device).
- Flue connection must be executed in accordance with instruction limiting maximum length of connection pipe  $\varnothing 80$  (5 m) and that 90-degree joints are considered as resistance on connection, which reduces length of connection pipe for 1 m (example: if there are 2 joints on flue connection, the connection cannot exceed length of 3 m). Flue connection must be fitted with joints with inspection holes for cleaning (see **figure 3**). Joints must be out of at least 3 segments (joints with three or more segments enable smooth flow of smoke gases through joint), it is prohibited to use joints with two segments (joints with two segments creates resistance in flow of smoke gases) (see **figure 6**).
- If the flue connection is longer as set forth in the instructions, the installer must use a reducing element (from  $\varnothing 80$  female connection to  $\varnothing 130$  female connection) immediately behind the fan, and the connection must be made with a pipe  $\varnothing 130$  (see **figure 21**).
- Electrical connection of boiler must be performed with a cable (see **figure 8**) in accordance with instructions. The boiler must not be connected to power supply with a plug – it must be connected directly to network by a toggle switch, breaking live and neutral wire.
- Electrical connection of distribution elements (pumps, solenoid valves, electromotor valves...) must be executed in accordance with the scheme in the instructions, i.e. supply for distribution elements must be executed from connection cable on the boiler (cable "pump") (see **figure 8**).
- Combustion device Biodom 54 A, pipes of central heating and flue connection must be earthed in accordance with professional regulations (earthing conductor with minimum cross-section 4mm<sup>2</sup>).



**Figure 29**



**Figure 30**



**Figure 31**

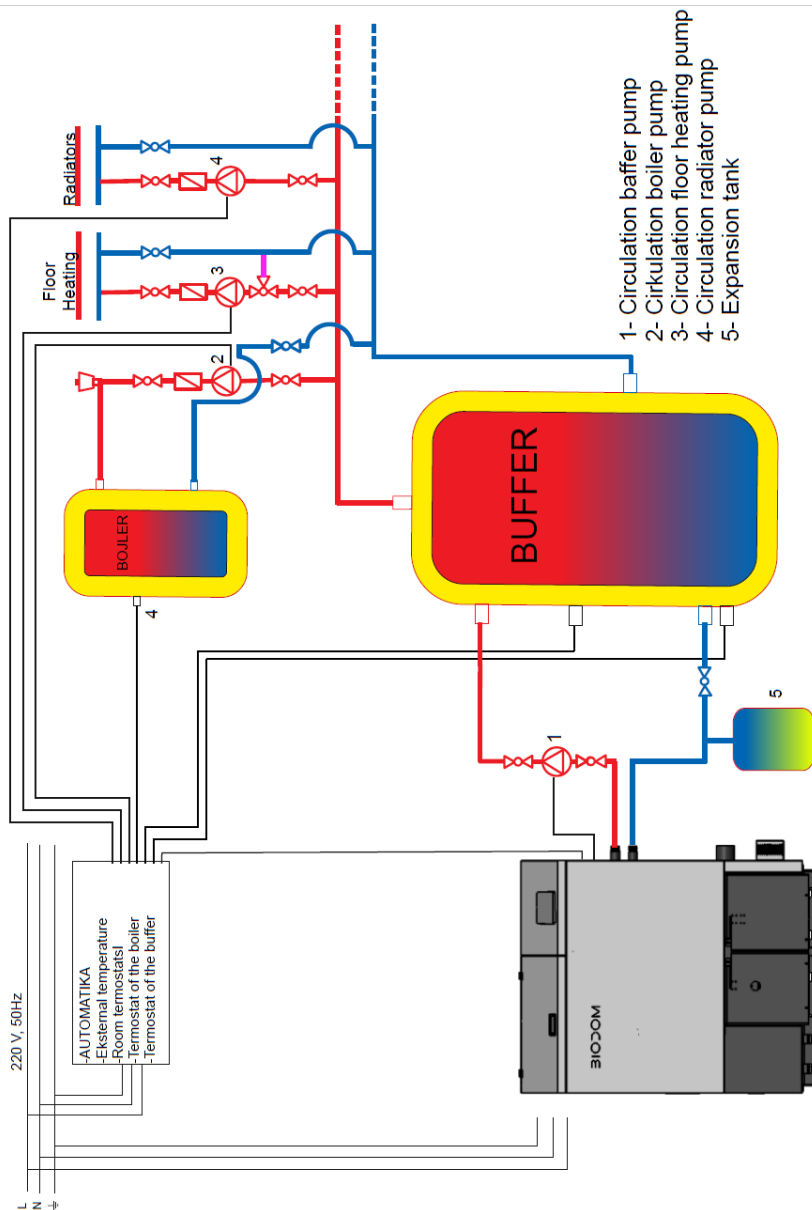


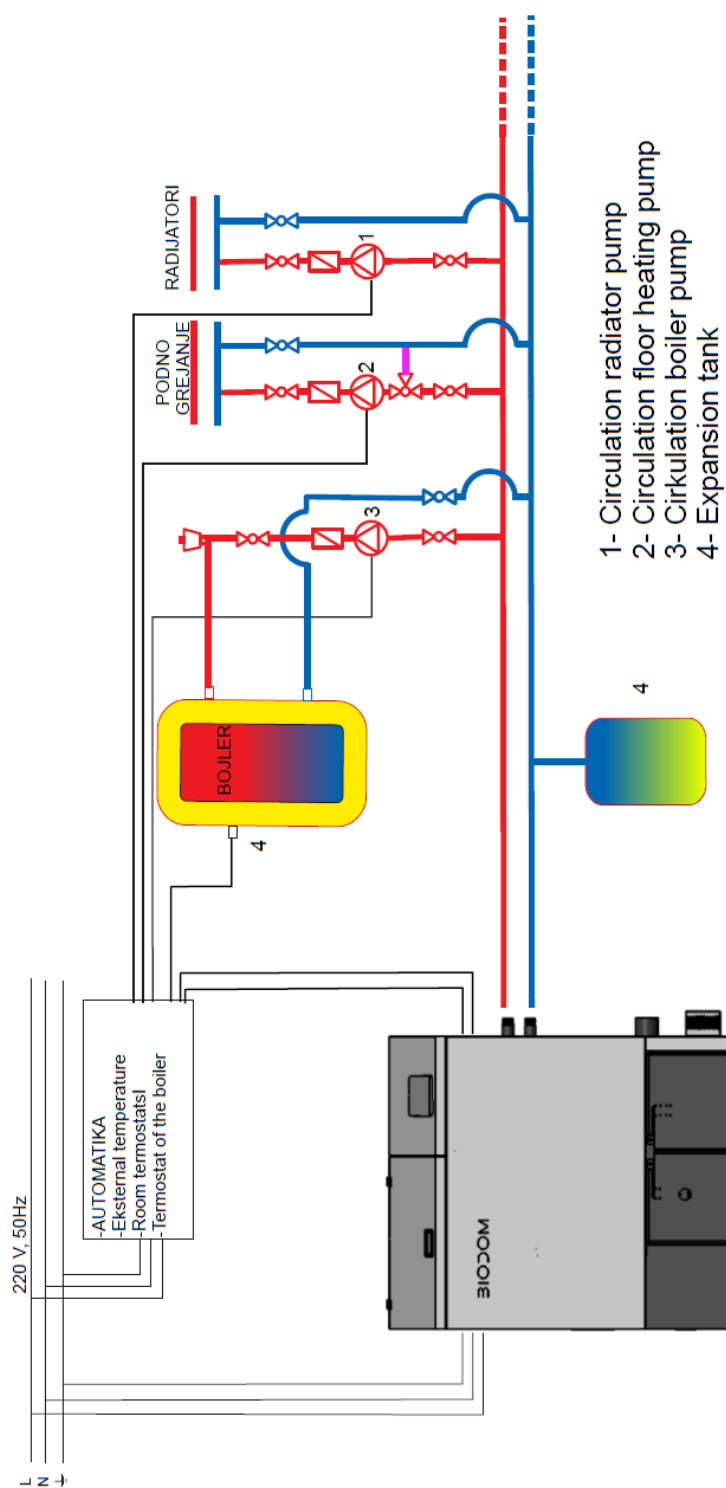
**Figure 32**



**Figure 33: Activating thermal safety**

## 17. CONNECTION SCHEMES







## 18. WARRANTY CONDITIONS

### OVERVIEW:

For the warranty to be completely valid, as set forth in Directive EEC 1999/44/E (42/2002), the user must carefully heed to instructions in this document, namely:

- Use the pellet boiler in its limits, in accordance with the conditions set forth in the instructions for use;
- Maintain the pellet boiler in a diligent and constant manner;
- Regard all safety precautions in accordance with laws in force;
- Avoid any unprofessional tampering with the boiler;
- Use only original spare parts.

### WARRANTY TIME CONDITIONS:

Warranty for all Biodom products is valid for 24 months from the date of first start-up, given that a regular maintenance inspection is performed no later than 12 months from the date of start-up.

### GENERAL WARRANTY CONDITIONS:

#### 1. We declare:

- that the product will function flawlessly in the warranty period, if used in accordance with the purpose of use, and if enclosed Instructions for use and maintenance will be adhered to;
- that, in the warranty period, company Biodom will, through authorized service companies, resolve all faults/defects, due to which the device is not working in accordance with purpose, no later than 45 days from written report of fault or defect;
- that a product, not repaired in the aforementioned deadline, will be, at the request of warranty holder, replaced with a new one, and the warranty period will extend for the time of the repair;
- that authorized service company guarantees warranty conditions with signature and stamp on published warranty.

#### 2. Calling on the warranty:

Warranty is valid under the condition that:

- The customer possesses a valid document (receipt), issued by salesman.
- The combustion device was installed by a qualified and/or trained person, who determines if the device meets all technical characteristics of the system where the device will be installed to, and must be necessarily in accordance with requirements set forth in the instructions.
- The pellet boiler is used in accordance with the instructions for use.

Warranty is called on at the salesman, where you have purchased the device.

Upon claiming fault, provide an accurate description of fault – defect.

#### 3. Period of guaranteeing service and spare parts:

- warranty period, in which we guarantee service and spare parts for undisturbed use of the product, is 7 years from the day of first start-up;
- in case of replacing production models Biodom, we guarantee spare parts for your product for 3 years;
- after 7 years, spare parts will be available, but they may be available in different colour than your product.

#### 4. Warranty is void or does not cover damages, caused by:

- Weather, chemical or electrochemical influences, lightning strikes, elementary accidents and/or natural disasters, incorrect use of the product, insufficient maintenance, modifications

to the product or tampering with the product, unsuitable or inefficient flue and other reasons not connected to the product, such as incorrect or unsuitable installation;

- Burning of materials, which do not correspond with the type of material given in these instructions;
- Any kind of damage caused by/during transport. Therefore, carefully inspect delivered goods upon reception. If it is damaged, immediately inform the salesman, and record the damage on admission document or supply order;
- If the start-up was performed by a company without appropriate authorization for Biodom products;
- If the product has been tampered with or repaired by an unauthorized person;
- If the user does not comply with the instructions for use and maintenance;
- If defects or faults arise on the heating device Biodom due to defects on equipment of other manufacturers.

Liability of company Biodom 27 d.o.o. is limited to unit supply. Unit must be installed properly in accordance with manufacturer instructions, as well as with laws in force. Installation must be performed by qualified personnel, defined by the manufacturer or representative/salesman<sup>1</sup> (and/or under his supervision and liability), who assumes full responsibility for final installation and subsequent correct operation of installed product. In case of non-fulfilment of conditions, company Biodom 27 d.o.o. is not liable in any case.

<sup>1</sup> As representative/salesman is considered any natural person or legal entity authorized for sales of products to end users of this warranty.

**NOTE:** Biodom 27 d.o.o. shall not be held liable for any damage and consequences, even if these are a consequence of replacement of malfunctioning part of the boiler.

Biodom 27 d.o.o. guarantees that all of its products are made of materials of highest quality and with manufacturing processes, which ensure perfect efficiency. If during normal use, there should be any defective or malfunctioning parts, they must be replaced.

***PARTS, SUBJECT TO NORMAL WEAR, NOT COVERED BY WARRANTY:***

- Seals and cast iron parts, which do not show any signs of faults, which could be attributed to manufacturing error;
- Changes in colour, cracks and small dimensional modifications are not substantiated and do not present grounds for rejection, as they are a consequence of natural characteristics of materials.

***LIABILITY:***

Biodom 27 d.o.o. shall not recognize any compensation for direct or indirect damage caused by or related to the product.

***SERVICE DURING WARRANTY PERIOD:***

**Biodom 27 d.o.o. handles problems regarding warranty only through its authorized persons.**

***COMPETENT COURT:***

The Court of Koper shall have jurisdiction for settling disputes.

In the event of replacement of parts, the warranty is not extended.

No reimbursement is acknowledged for the period of time, during which the product could not be used.

*Biodom 27 d.o.o. is not liable for any mistakes in the instructions. We reserve the right to changes without any prior notice.*

## OVERVIEW OF SERVICES

### SERVICE 1 (SERVICE IN THE WARRANTY PERIOD)

NUMBER OF REPORT ON ANNUAL REVIEW OF BOILER: \_\_\_\_\_

TYPE OF WORK: ☐ REGULAR MAINTENANCE ☐ REGULAR MAINTENANCE +3 ☐ RECLAMATION

ENERGENT MANUFACTURER: \_\_\_\_\_

OTHER: \_\_\_\_\_

CLIENTS SIGNATURE: \_\_\_\_\_

STAMP AND SIGNATURE OF SERVISER: \_\_\_\_\_

DATE: \_\_\_\_\_

### SERVICE 2

NUMBER OF REPORT ON ANNUAL REVIEW OF BOILER: \_\_\_\_\_

TYPE OF WORK: ☐ REGULAR MAINTENANCE ☐ REGULAR MAINTENANCE +3 ☐ RECLAMATION

ENERGENT MANUFACTURER: \_\_\_\_\_

OTHER: \_\_\_\_\_

CLIENTS SIGNATURE: \_\_\_\_\_

STAMP AND SIGNATURE OF SERVISER: \_\_\_\_\_

DATE: \_\_\_\_\_

### SERVICE 3

NUMBER OF REPORT ON ANNUAL REVIEW OF BOILER: \_\_\_\_\_

TYPE OF WORK: ☐ REGULAR MAINTENANCE ☐ REGULAR MAINTENANCE +3 ☐ RECLAMATION

ENERGENT MANUFACTURER: \_\_\_\_\_

OTHER: \_\_\_\_\_

CLIENTS SIGNATURE: \_\_\_\_\_

STAMP AND SIGNATURE OF SERVISER: \_\_\_\_\_

DATE: \_\_\_\_\_

#### SERVICE 4

NUMBER OF REPORT ON ANNUAL REVIEW OF BOILER: \_\_\_\_\_

TYPE OF WORK: ☐ REGULAR MAINTENANCE ☐ REGULAR MAINTENANCE +3 ☐ RECLAMATION

ENERGENT MANUFACTURER: \_\_\_\_\_

OTHER: \_\_\_\_\_

CLIENTS SIGNATURE: \_\_\_\_\_

STAMP AND SIGNATURE OF SERVISER: \_\_\_\_\_

DATE: \_\_\_\_\_

\_\_\_\_\_

#### SERVICE 5

NUMBER OF REPORT ON ANNUAL REVIEW OF BOILER: \_\_\_\_\_

TYPE OF WORK: ☐ REGULAR MAINTENANCE ☐ REGULAR MAINTENANCE +3 ☐ RECLAMATION

ENERGENT MANUFACTURER: \_\_\_\_\_

OTHER: \_\_\_\_\_

CLIENTS SIGNATURE: \_\_\_\_\_

STAMP AND SIGNATURE OF SERVISER: \_\_\_\_\_

DATE: \_\_\_\_\_

\_\_\_\_\_

#### SERVICE 6

NUMBER OF REPORT ON ANNUAL REVIEW OF BOILER: \_\_\_\_\_

TYPE OF WORK: ☐ REGULAR MAINTENANCE ☐ REGULAR MAINTENANCE +3 ☐ RECLAMATION

ENERGENT MANUFACTURER: \_\_\_\_\_

OTHER: \_\_\_\_\_

CLIENTS SIGNATURE: \_\_\_\_\_

STAMP AND SIGNATURE OF SERVISER: \_\_\_\_\_

DATE: \_\_\_\_\_

\_\_\_\_\_

#### SERVICE 7

NUMBER OF REPORT ON ANNUAL REVIEW OF BOILER: \_\_\_\_\_

TYPE OF WORK: ☐ REGULAR MAINTENANCE ☐ REGULAR MAINTENANCE +3 ☐ RECLAMATION

ENERGENT MANUFACTURER: \_\_\_\_\_

OTHER: \_\_\_\_\_

CLIENTS SIGNATURE: \_\_\_\_\_

STAMP AND SIGNATURE OF SERVISER: \_\_\_\_\_

DATE: \_\_\_\_\_

\_\_\_\_\_



**IZJAVA PROIZVAJALCA O SKLADNOSTI  
DECLARATION OF CONFORMITY**

Naziv proizvajalca/Producer:

**Biodom 27 d.o.o.**  
**OIC Hrpelje 4a, 6240 Kozina, Slovenia**

Izjavlja, da v nadaljevanju opisani stroj/Declares that the below  
mentioned machine

**Toplovodni kotel na trdo gorivo/Solid fuel hot water boiler**

**Tip/Type: BIODOM 54**  
**Kotel na pelete/ pellet boiler**

Serijska številka/serial number:

--	--	--	--	--	--	--	--

leto proizvodnje/year of production:

--	--	--	--

**Ustreza osnovnim zdravstvenim in varnostnim zahtevam direktiv/ Conforms  
to the following CE directives:**

Direktiva/Directive 2006/42/CE o strojih/on machinery

Direktiva/Directive 2014/35/ES o nizkonapetostni opremi/on low voltage equipment

Direktiva/Directive 2014/30/ES o elektromagnetni združljivosti/on electromagnetic  
compatibility (EMC)

**Harmonizirani standardi/Harmonised standards:**

EN ISO 12100-1:2004 and A1:2010

EN ISO 12100-2:2004 and A1:2010

EN 303-5:2012

EN 60204-1:2006 and A1:2009

EN 61000-6-3:2007

EN 61000-6-2:2005

EN 61000-3-3:A1 2002

EN 61000-3-3:A2 2006

Kozina, 15.02.2017

Biodom 27 d.o.o.

Anton Kavčič, director

**BIODOM**  
BIODOM 27 d.o.o.  
OIC Hrpelje 4a, 6240 Kozina

**BIODOM 27 d.o.o.**

OIC Hrpelje 4a

6240 Kozina, Slovenia

Tel.: +386 5 6801456

Fax: +386 82051087

Website: [www.biodom27.si](http://www.biodom27.si)

E-Mail: [info@biodom27.si](mailto:info@biodom27.si)